

New - Waste Facility Tracking System

Tracking System to be Implemented for Libau Landfill and Transfer Stations for Residents

In your property tax bill this year you will receive two ID cards with tracking codes on them. Starting September 30, 2017, your card will be scanned whenever you go to one of the RM's waste facilities: Libau Landfill, Grand Marais Transfer Station, Gull Lake Transfer Station, Clarke Road Transfer Station, and Dunning Road Transfer Station.

The ID cards have no fee and are for data collection only. This does not affect the current rates - you will still pay the same fees to use the waste facilities. View the current tipping fees [here](#).



Why are we starting this system?

Tracking how residents use these waste facilities will help us become more efficient. We will better understand:

- Who uses the facilities
- When they use it
- What they bring

This information will help us make these facilities better suited to the needs and habits of residents.

This will also ensure that non-residents are paying the higher fees that are applicable for them.

With the arrival of new and inexpensive technology, tracking is now within our reach by using smart phones to do the scanning and QR codes. When curbside pickup is implemented in 2018, we will be able to measure how this impacts use of waste facilities and adjust our waste services accordingly.

How will it work?

- Every property will receive two ID cards with a tracking code with their property tax bill
- The tracking code will be connected to your roll number
- After September 30, 2017, when you go to Libau Landfill or a transfer station bring your ID card
- Attendants will scan your card and record what you are bringing

When do I have to start using my ID card?

You will be required to start showing your ID card starting on Saturday, September 30, 2017.

When will you be mailing the property tax bills?

The property tax bills will be mailed out in the last week of August, with the ID cards enclosed.

Can I get my ID cards before I get my property tax bill?

No, the ID cards will not be available before the property tax bills are mailed out.

How much does it cost to implement this tracking system?

The cost to implement this program is \$8,500 plus taxes.

Will this tracking system affect the fees I pay at the landfill/transfer station?

No, all the rates to use the landfill and transfer stations will stay the same.

You might not be aware that the landfill and transfer station have different resident rates for some items and that the transfer station does not accept some items that the landfill does accept. For example, a resident can take up to ten bags of garbage to the landfill for free but would have to pay \$1.25 per bag at the transfer stations. This is because we must transfer the bags to Libau Landfill. Click [here](#) to see the tipping fees and what each facility accepts.

What if I am at the waste facility and I forgot my card?

After the tracking program is launched, there will be a grace period of one month where, if you forgot your card, the staff will still allow you to drop off your refuse.

What if I lose my card?

Phone, email or drop by the RM office and we will make you a new one which you can pick up or we can mail.

Let's Talk Trash







Tenders are out and we are now waiting for some prices from curbside pickup contractors. We then will price out a few service packages and **survey residents this fall on which service package they prefer.**

[Be sure to sign up for email updates with us so we can send you the survey \(External link\)](#) – you can sign up on the home page of our website, in the left-hand column.

Throughout 2016, we asked you what you would like to see to increase recycling rates and improve service levels. The survey said 67% of folks south of road 83 north would like to see curbside garbage and recycling pickup. [See Proposed Garbage and Recycling Plan map for general area.](#)

Learn more by reading the [Ask a Question Here](#) section below and our [FAQ](#) and [Overview](#) pages.

Timeline

- 
October 2016: Let's Talk Trash Survey
 476 of you took our survey and 67% of folks south of Road 83 north would like to see curbside garbage and recycling pickup
- 
Summer 2017
 Tender send out to curbside pickup providers
- 
Fall 2017
 Analyze the service options and get resident feedback on top options
- 
Winter 2017-18
 Design a curbside pickup plan based on public input
- 
Winter 2017-18
 Create a Special Area Levy to ensure only service area is charged and hold a public hearing
- 
Spring 2018
 Curbside pickup to start



Drainage

The RM is taking steps to improve drainage to help ease overland flooding in its most flood-prone areas.

Increasing concern by residents about flooding around homes and farmer's fields in the Gunns Creek and Bunns Creek areas caused the RM to look at how to fix these problems.

In 2016, the RM conducted a drainage study in these areas. The engineer's report suggests options for improving water flow and decreasing flooding, including cleaning drains (ditches), enlarging drains, and enlarging culverts.

Download [Bunns Creek and Tributary Drains – Drain and Crossing Upgrades Hydrologic and Hydraulic Assessment](#) here.

Download [Gunns Creek Hydrologic and Hydraulic Assessment Drain and Crossing Upgrades](#) here.

The RM recently hired a consultant to review these options, and will determine which will have the most impact in a cost effective way. Cost estimates for these areas are:

- Bunns Creek - \$890,000 to \$1,380,000
- Gunns Creek - \$1,000,000 to \$2,250,000

The RM is asking the province to partner on some of these improvements and has applied for grants. Council is also considering borrowing money to do some of the work.

The RM is in the process of conducting drainage studies in the Ashfield Road/Floodway Drive area and in the area of Anderson and Donald Streets in Grand Marais.

The RM is also investigating problem areas served by drains maintained by both the province and the RM, particularly in the central part of the RM east of Highway 59.



Some Background on Drainage*

*From [Manitoba Water Stewardship Regional Operations Drainage Infrastructure Water Rights Licensing](#)

Land drainage is a partnership between landowners, municipalities, Conservation Districts and the Province. Basic agricultural land drainage works in the province were completed in the early 1900's, under the jurisdictions of various municipally-based entities known as Drainage Districts. In the 1930's and 1940's provisions were made for the maintenance of the drains through the establishment of Drainage Maintenance Districts, again established on municipal boundaries.

In 1965 Manitoba took a proactive approach to resolving inter-municipal drainage issues by being the first of all surrounding jurisdictions to take on the responsibility for Provincial Waterways (the major drains) based on a watershed systems approach. In general, municipalities became responsible for those components of the tributary system which outlet into the Provincial Waterways.

During the 1960's and the period between the late 1970's and the mid 1980's, a number of cost sharing programs between federal, provincial and municipal jurisdictions resulted in significant temporary boosts to drainage system reconstruction and development. The dryer cycle in regional weather of the late 1980's, resulted in drainage issues becoming less prominent. A commensurate loss of federal support saw provincial technical and financial resources dedicated to drainage significantly reduced.

In 1989 the provincial government held a series of public consultations which resulted in the publication of Manitoba's Water Policies. Drainage was raised as a significant issue. Drainage priorities were outlined as follows: maintenance of the existing system -first priority, reconstruction -second priority, and new construction -third priority. The policies further stated that drainage should be undertaken on a watershed basis in order to encompass issues related to water retention, control and timing of runoff.

During the 1990's, a wetter than normal cycle predominated, revealing the effects of the deteriorated drainage infrastructure across the province, i.e. attendant crop and other flooding related damages. The increased profile of drainage issues also highlighted regulatory shortcomings. The Province responded by transferring staff to regional postings so that drainage regulation could be administered at the local level. Enforcement of The Water Rights Act was actively pursued for the first time. The result of these changes was quicker action on enforcement and a shorter turn around time on licensing. There was also a significant increase in drainage license applications.

Property Tax Info

****Note: 2017 Property tax bills will be mailed out in the last week of August***

Property tax due date

Property taxes are due on October 31.

Paying property taxes

In person at the RM office:

- Office hours are Monday to Friday from 8:30 am to 4:30 pm
- The RM office is located at 1043 Kittson Road in East Selkirk.
 - For after-hours payments, use the mail slot at the back door (top of the stairs) of the RM Office

Payment methods

- **Cheque** (payable to the RM of St. Clements, can be post-dated)
- **Cash**
- **Debit:** Check with your financial institution to ensure your point of purchase limit is high enough for the amount you wish to pay.
Please note: we currently do not accept credit card payments.

By Mail

Send cheque payable to the RM of St. Clements (may be post-dated):
Box 2, Group 35, RR 1
East Selkirk, Manitoba
R0E 0M0

Pre-authorized payments (PAP)

- PAPs are regular payments drawn monthly, quarterly or annually from your financial institution. This can be set up at the RM office.
- You will receive a tax statement in the summer. Payments made before May 31 will not be reflected on your tax statement but have been credited to your tax account. Review regularly to ensure proper payments are being made; you are still responsible if your financial institution makes an error.

Online

- Pay online through your financial institution's website.
 - For this service we have partnered with BMO, TD Canada Trust, CIBC, Manitoba Credit Unions, RBC, Scotia Bank Group.

- Login to your financial institution's website to make the payment.
- Set the transaction up as a bill payment. For the bill payee, it varies between financial institutions but it will be something like 'RM of St. Clements (taxes)'
- Use your roll number as the account number Drop any zeros at the start of the number, ignore the decimal, and add any numbers after the decimal
example 1: roll number 00012345.123 would be account number 12345123
example 2: roll number 00054321.000 would be account number 54321000
- Make the payment as you would a bill payment
- Contact your financial institution if you are not sure how to set this up

Late payments

Penalties of 1.25% will be added on the first day of every month that taxes are in arrears*.
Properties that are in arrears for more than two years are subject to tax sale proceedings.

* *arrears: money that is owed that should have been paid earlier*

Property tax statements

- Tax statements are mailed out mid-summer of every year.
- Tax statements are sent to the address the RM has on file.
 - If you didn't receive a tax statement, you are still responsible for paying your property taxes.
 - Contact the RM office at 204-482-3300 to request a copy.
- It is the property owner's responsibility to ensure that the RM of St. Clements has the correct mailing address.
- If you are on the Pre-authorized Payment (PAP) plan, you will still receive a tax statement.
 - The balance will show payment to May 31 of the previous year but your account has been credited.

Tax Statement appeals

You can not appeal your statement, but you can appeal the assessed value of your property through the board of revision held every fall.

Moving in or out of the municipality

- Let the RM office know of any change in ownership or mailing address in order to ensure that the tax statement is properly forwarded.
If the property is in the process of changing owners, the person named on the tax statement is responsible for paying the property tax.
- If ownership changed after the tax statement was issued, please forward the tax statement to the current owner or return it immediately to the RM office.
- The property owner is responsible for tax payment even if they didn't receive a

statement and are liable for penalties arising from late payment.

Education Property Tax Credit (EPTCA)

The EPTCA Application form is available on the Department of Finance website (<https://www.gov.mb.ca/finance/tao/eptc.html>) or at the Municipal office. This website also has a list of Frequently Asked Questions about EPTCA.

Whether you own or rent your home, you could be eligible to save up to \$700 with the Manitoba government's Education Property Tax Credit (EPTC). The credit is provided by the province of Manitoba to help cover the school taxes you pay, or a portion of your rent either directly on your municipal property tax statement or through your income tax return.

Seniors may be eligible for additional savings. See below to learn more.

Home owners

If you own your home and pay property taxes, you can save up to \$700 off your property taxes with the EPTC. To check if you are already receiving the Credit, review your property tax statement from your local municipality to see if you receive the "Manitoba Education Property Tax Credit Advance". If you do not already have the Credit applied to your municipal property tax statement, you can still receive it:

- The Credit can be applied to your municipal property tax statement if you apply before November 15. To qualify for this option, you must have lived in your home since January 1 of the current year. Using this approach, the Credit will be applied to your property taxes and you will only then be required to pay the difference. In the following year, the Credit will automatically be advanced on your municipal property tax statement. [2017 Tax Year Application for Advance - Fillable Form](#) and [2017 Tax Year Application for Advance - Non-Fillable Form](#).
- After November 15, you can claim the EPTC on your personal income tax return. The Credit is claimed on the Manitoba Income Tax Form MB479 – Manitoba Credits.

Renters

If you rent your home, you may still qualify to receive up to \$700 in savings with the EPTC. The Credit is claimed on the Manitoba Income Tax Form MB479 – Manitoba Credits.

Seniors

If you are 65 of age or older by the end of the year, you may qualify for additional savings from the Manitoba government to help cover your education property taxes:

Seniors School Tax Rebate

Manitoba seniors who live in their own homes may be eligible for the Seniors' School Tax Rebate. [Learn more](#).

Seniors with income under \$40,000

Senior households with income under \$40,000 may be eligible for an additional EPTC of up to \$400. The Credit is claimed on the Manitoba Income Tax Form MB479 – Manitoba Credits.

[Learn more.](#)

For more information, please contact:

Manitoba Tax Assistance Office

Phone: 204-948-2115 (Toll-free 1-800-782-0771)

email: TAO@gov.mb.ca

Farmland School Tax Rebate

Applications for the 2016 Farmland School Tax Rebate and proof that property taxes along with any penalties and interest are paid in full must be received by Manitoba Agricultural Services Corporation by the **March 31, 2017 deadline**. For additional information see www.masc.mb.ca/fstr or call 204-726-7068.

The Manitoba government is offering a rebate of up to 80% of the school taxes levied on your farmland for 2016.

The Farmland School Tax Rebate reduces the net school taxes paid on your farmland. Your application for the 2016 tax year must be received by MASC by March 31, 2017.

How it works

If you are a Manitoba resident who owns farmland in Manitoba and you paid your 2016 property taxes, you may be eligible for the rebate. The rebate applies only to the school taxes assessed on your farmland and does not apply to residences or buildings.

How to apply

If you received a rebate for 2015, a 2016 application form was mailed to you. You can also download an application form from masc.mb.ca or pick one up from your local Manitoba Agricultural Services Corporation (MASC) office, Manitoba Agriculture office or municipal office.

For more information:

Website: masc.mb.ca/fstr

Email: fstr@masc.mb.ca

Phone: 204.726.7068

South St. Clements Recreation

Summer 2017 Update

The South St. Clements Activity Centre is now in the design process. The design is expected to be ready this fall and we will consult residents on it for their feedback.

Spring 2017 Update

It's been more than a decade since the old Donald School recreation facility closed its doors. Members of our community have worked hard to develop a replacement for this gathering spot. Over the past few years, a [recreation needs assessment](#) and a [facility feasibility study](#) gathered your input on what you would like to see for recreation in South St. Clements.

The project is budgeted for \$3 million and to be funded with a combination of grants, fund raising and borrowing.

Municipal owned land on Donald Road has been selected as the best spot to develop a new facility. A committee of Council is reviewing all your past input and expects to have a design for a building and property development this fall.

Winter 2016-17 Update

RM of St. Clements Recreation Manager Dave Harcus, 23 volunteers from south St. Clements and a consultant are working on recreation facility recommendations for the south to present to Council.

South St. Clements Recreation Survey

Thanks to the over 300 people who completed our survey about recreation options in south St. Clements in April of 2016. Twenty-three people from south St. Clements volunteered to be on a committee to make recreations recommendations to council.

The majority of respondents were unsatisfied or very unsatisfied with the current recreation options in the RM. The vast majority (65%) of respondents wanted money invested 50% in outdoor amenities and 50% in a building. Read more in the [South St. Clements Survey Report](#).

[You can also download the raw data here.](#)

South St. Clements Community Recreation Forum

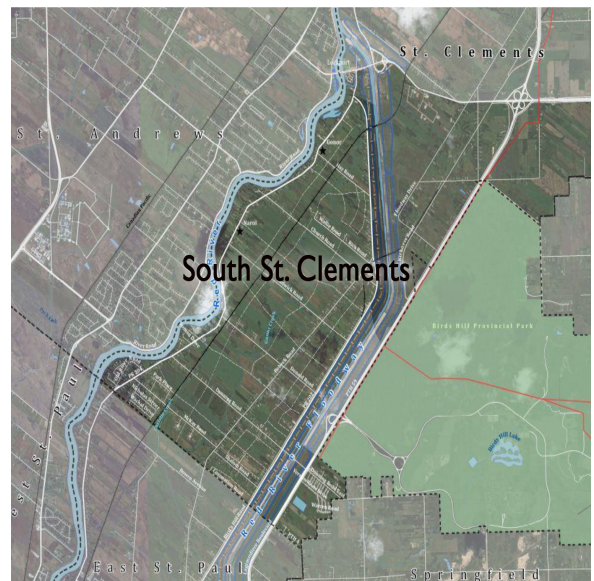
New recreation options for South St. Clements residents have been in the works for many years. Many volunteers, RM Councilors and consultants have thought long and hard about how best to proceed. Now is the time to refresh, regroup and decide how to proceed.

Background

- **1999/2000:** South St. Clements Activity Centre (SSCAC) volunteers ran recreation programs at Donald School, surveyed 1200 homes in the community about recreation needs. Details about SSCAC can be found in the *South St. Clements Recreation Needs Assessment Report* on pages 8-15. [Download these pages.](#)
- **2006:** Donald School becomes unusable. Residents can no longer use the facility where they run recreation programs.
- **2013:** Dillon Consulting completed the *South St. Clements Recreation Needs Assessment* that proposed seventeen recommendations to meet recreation needs of South St. Clements residents. Download [South St. Clements Recreation Needs Assessment Report \(10.8 MB\)](#)
- **2014:** Dillon Consulting undertook a [feasibility study](#) for planning the construction of a proposed activity centre. Plans were presented at public open house on September 24, 2014.
 - [Download RM of St. Clements Feasibility Study Part 1 \(7.8 MB\)](#)
 - [Download RM of St. Clements Feasibility Study Part 2 \(7.4 MB\)](#)
 - [Download RM of St. Clements Feasibility Study Part 3 \(10 MB\)](#)
 - [Download RM of St. Clements Feasibility Study Part 4 \(3 MB\)](#)

About South St. Clements

- South St. Clements has an area of about 29 square kilometres and it is bounded by the Red River to the west, Lockport to the north, East St. Paul to the south and the floodway to the west with a small portion east of the floodway.
- Population in 2011 was 3803. Using the growth rate of the RM, the projected population of the area in 2016 is 5444.
- There are 4 centres of population: the villages of Narol and Gonor, Keaschell Trailer Park, and the area known as Old River Road.



Dust Control

Gravel roads are dusty. This is part of the reality of living on a gravel road. When gravel roads dry out they can create dust in the air that settles in adjacent areas. The RM applies a coat of dust control (a liquid form of magnesium chloride) on the road **in front of all homes** to suppress the airborne dust.

The main reason we apply dust control is to **reduce dust in front of homes**. We **do not** apply dust control if there is no home, so there may be long, dusty stretches if there are no homes. If a road has particularly high traffic or heavy truck traffic, we might apply dust control even if there are no homes to ensure safer visibility.

We only apply dust control product once per year. Please do not phone and ask for dust control at other times of the year as we will not be applying it. It is not in our budget.

When do you start dust control?

Dust control can begin when spring road restrictions are lifted and roads have been shaped and graveled, **usually by late June**. It can take three weeks to apply dust control to all the roads in the RM of St. Clements. The roads are graded before applying dust control to ensure good application and to help it last longer. We try not to grade the roads after dust control is applied as it ruins the dust control.

What do you use to control the dust?

We use a liquid form of magnesium chloride, a type of salt often extracted from sea water. Magnesium chloride continuously absorbs moisture from the air and literally traps water and locks it in. Magnesium bonds with fine dust particles in the roadbed to stabilize the soil which reduces dust, slows the loss of gravel on road beds and shoulders, and reduces the need for road grading. It reduces erosion and makes gravel surfaces harder and more compact. In addition, an ion exchange happens between the positive and negative charges further binding the road together.

Magnesium chloride applications can also reduce road maintenance costs:

- Can be used on many soil types
- Reduces potholes
- Help reduce washboards on roadways
- Stabilizes the soil resulting in less loss of road base
- Reduces the amount of overall road maintenance required and material to rebuild

Is dust control harmful?

Magnesium chloride, a naturally occurring mineral, is a type of salt extracted from sea water. This environmentally preferred compound can be used in sensitive watershed wetland areas and is recognized in Canada as a safe alternative to other dust reduction systems. It is approved by the U.S. Environmental Protection. In large concentrations, it can be corrosive and can damage plants.

Do I need to keep kids and pets indoors for a period of time after you spray?

No. Magnesium chloride is a non-toxic and environmentally friendly product, and there's no odor during or after spraying. Not only is magnesium chloride non-toxic, but it actually helps prevent airborne disease.

Landfill and Transfer Station Summer Hours

Effective – Sunday May 14, 2017

* **Please note:** *The landfill and transfer stations are closed on statutory holidays*

For questions regarding waste disposal or recycling please contact the Landfill Office at 766-2388 or toll free at 1-866-205-8914.

Location	Sunday	Monday	Tuesday	Wednesday	Thursday	Friday	Saturday
Libau Landfill	Closed	Closed	9:00 am – 5:00 pm	9:00 am – 5:00 pm	9:00 am – 5:00 pm	9:00 am – 5:00 pm	9:00 am – 5:00 pm
Dunning Road Transfer Station	9:00 am – 5:00 pm	11:00 am – 7:00 pm	Closed	Closed	11:00 am – 7:00 pm	11:00 am – 7:00 pm	9:00 am – 5:00 pm
Clarke Road Transfer Station	9:00 am – 5:00 pm	11:00 am – 7:00 pm	Closed	Closed	11:00 am – 7:00 pm	11:00 am – 7:00 pm	9:00 am – 5:00 pm
Grand Marais Transfer Station	10:00 am – 6:00 pm	10:00 am – 6:00 pm	Closed	Closed	10:00 am – 6:00 pm	10:00 am – 6:00 pm	10:00 am – 6:00 pm
Gull Lake Transfer Station	10:00 am – 6:00 pm	10:00 am – 6:00 pm	Closed	Closed	10:00 am – 6:00 pm	10:00 am – 6:00 pm	10:00 am – 6:00 pm

Recycling

- All recyclables can go together except glass, which must be separated.
 - Why? Because currently glass has a poor recycling market at the moment so we actually crush it and use it for road building, as it is a superior product for this. No plastic bags required! Just empty your recycling bags into the bin and reuse your bags.

What can I recycle?

**please leave all lids on containers and bottles*

- Food and beverage containers (eg. cans, bottles, cartons)
- Plastic containers and packaging with a recycling triangle
- Newspapers, flyers, mail, magazines, paper
- Boxboard/cardboard boxes (eg. pizza, cereal, laundry)
- Shredded paper can be placed in a full size (77 litre) clear plastic bag
- Cardboard egg cartons and paper tubes

What can't I recycle?

- Plastic bags, cellophane
- Plastics without a recycling triangle
- Plastics that are not a container (eg. laundry baskets, toys, plastic cutlery)
- Aluminum foil, foil pie plates, foil food containers
- FOAM: cups, food containers, egg cartons, meat trays, packing materials
- Mirrors, window glass, broken glass
- Light bulbs, drinking glasses, ceramics, cookware
- Steel pots and pans, scrap metal
- Waxed cardboard (eg. frozen food boxes, tomato boxes)

St. Clements Libau Landfill & Transfer Station Tipping

<i>Type of Material</i>	<i>Libau Landfill Resident Fees</i>	<i>Libau Landfill Resident Fees</i>	<i>Commercial (Libau Landfill only)</i>	<i>Transfer Resident Fees</i>	<i>Transfer Non-Resident Fees</i>
Garbage bags of daily generated waste	Free	\$2.50 per bag	\$2.50 per bag	\$1.25	\$2.50 per bag
Pick-up truck/small trailer load of garbage bags (10+) **	\$12.50	\$25.00	\$71.00 mt	\$12.50	\$25.00
Pick-up truck/small trailer load of loose or misc. garbage ***	\$12.50	\$25.00	\$71.00 mt	Not accepted	Not accepted
One tonne truck or larger of misc. garbage	\$43.50 mt	\$43.50 mt	\$71.00	Not accepted	Not accepted
Large trailer (eg. horse) of misc. garbage ****	\$43.50 mt	\$43.50 mt	\$71.00	Not accepted	Not accepted
Construction/demolition/renovation material †	\$43.50 mt	\$43.50 mt	\$71.00	Not accepted	Not accepted
Electronic Recycling	Free	Free	Free	Free	Free
Household Recycling	Free	Free	Free	Free	Free
Used motor oil	Free	Free	Free	Free	Free
Liquid agricultural containers (triple rinsed)	Free	Free	Free	Not accepted	Not accepted
Tires – no rim	Free	Free	Free	Free	Free
Passenger tires on rim	\$5.00	\$5.00	\$5.0	\$5.00	\$5.00
Tractor or oversize tires on rim	\$10.00	\$10.00	\$10.0	\$10.00	\$10.00
Clean burnables (grass, leaves, branches, bales)	Free	\$2.00	\$71.00	Free	\$2.00
Auto	Free	\$2.00	\$1.0	Free	\$2.00
Mattress/ box spring or sofa chair	Free	\$10.00 per item	\$10.00 per	Not accepted	Not accepted
Sofa or	Free	\$20.00 per item	\$20.00 per	Not accepted	Not accepted
Fridges, freezers, A/C, water coolers decommissioned †	\$30.00	\$30.00	\$30.0	Not accepted	Not accepted
Propane Tanks	Free	Free	Free	Free	Free

1 car/truck & 1 trailer together: will be charged a minimum of \$25.00 for residents and a minimum of \$50.00 for non-residents and commercial

Garbage bag size: 26" x 32.5" (regular)

Boxes: are considered loose and will be charged for

Loose garbage: boxes of garbage or garbage that is not

***Daily generated waste:** (otherwise known as household) food scraps, tissues, kitchen waste, bathroom waste

**** Small trailer:** single axle or equivalent to a ½ ton box (4 feet x 6 feet long x 2 feet high)

***** Misc. garbage:** shop, yard, basement, house or garage cleanup. Example: clothes, pillows, books, dressers, car seats, plastic pools, etc.

****** Larger trailer:** double or triple axle and larger than a ½ ton box. This includes small, single axle trailers with extended sides

† Construction/demolition/renovation material: any material that comes from or goes into erecting, demolishing or repairing a structure, including but not limited to drywall, windows, doors, flooring, carpets, sinks, toilets, tubs, insulation,

‡ Decommissioned means that you have had a licensed technician come out, remove the coolant and stamp the unit