

Legend

1:10k Map Grid

Map Grids with Road Classification Data

Rural Municipality of St.Clements

025005000metres

1:200,000 (At original document size of 11x17)

Notes

1. Coordinate System: NAD 1983 UTM Zone 14N

2. Microsoft product screen shot(s) (base imagery) reprinted with permission from Microsoft Corporation

Project Location

113707070

RM of St.Clements, MB

Prepared by JH on 2017-03-10

Technical Review by GK on 2017-03-10

Client/Project

Client: Rural Municipality of St.Clements

Project: RM of St.Clements 2016 Roadworks

Title

Survey Map Index

DRAFT

Disclaimer: Stantec assumes no responsibility for data supplied in electronic format. The recipient accepts full responsibility for verifying the accuracy and completeness of the data. The recipient releases Stantec, its officers, employees, consultants and agents, from any and all claims arising in any way from the content or provision of the data.

Map 1





### Legend

RM of St.Clements

### Road Surface Classification

Chip Seal

Hot Mix Asphalt

0 150 300 metres  
1:10,000 (At original document size of 8.5x11)

### Notes

1. Coordinate System: NAD 1983 UTM Zone 14N
2. Microsoft product screen shot(s) (base imagery) reprinted with permission from Microsoft Corporation.



Project Location 113707070

RM of St.Clements, MB

Prepared by JH on 2017-03-10

Technical Review by GK on 2017-03-10

Client/Project

Client: Rural Municipality of St.Clements  
Project: RM of St.Clements 2016 Roadworks

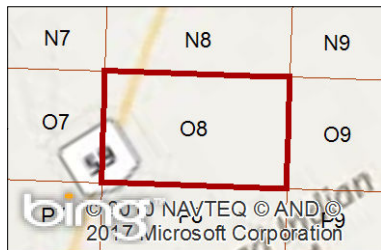
Title

**RM of St.Clements  
Road Surface Classification  
Mapbook**


**DRAFT**

**Map E3**







### Legend

 RM of St.Clements

### Road Surface Classification

-  Chip Seal
-  Hot Mix Asphalt



### Notes

1. Coordinate System: NAD 1983 UTM Zone 14N
2. Microsoft product screen shot(s) (base imagery) reprinted with permission from Microsoft Corporation.



Project Location 113707070

RM of St.Clements, MB Prepared by JH on 2017-03-10  
Technical Review by GK on 2017-03-10

Client/Project

Client: Rural Municipality of St.Clements  
Project: RM of St.Clements 2016 Roadworks

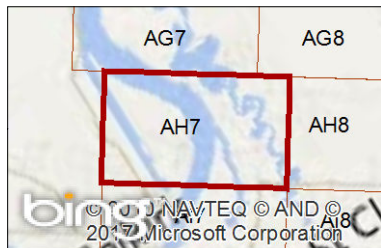
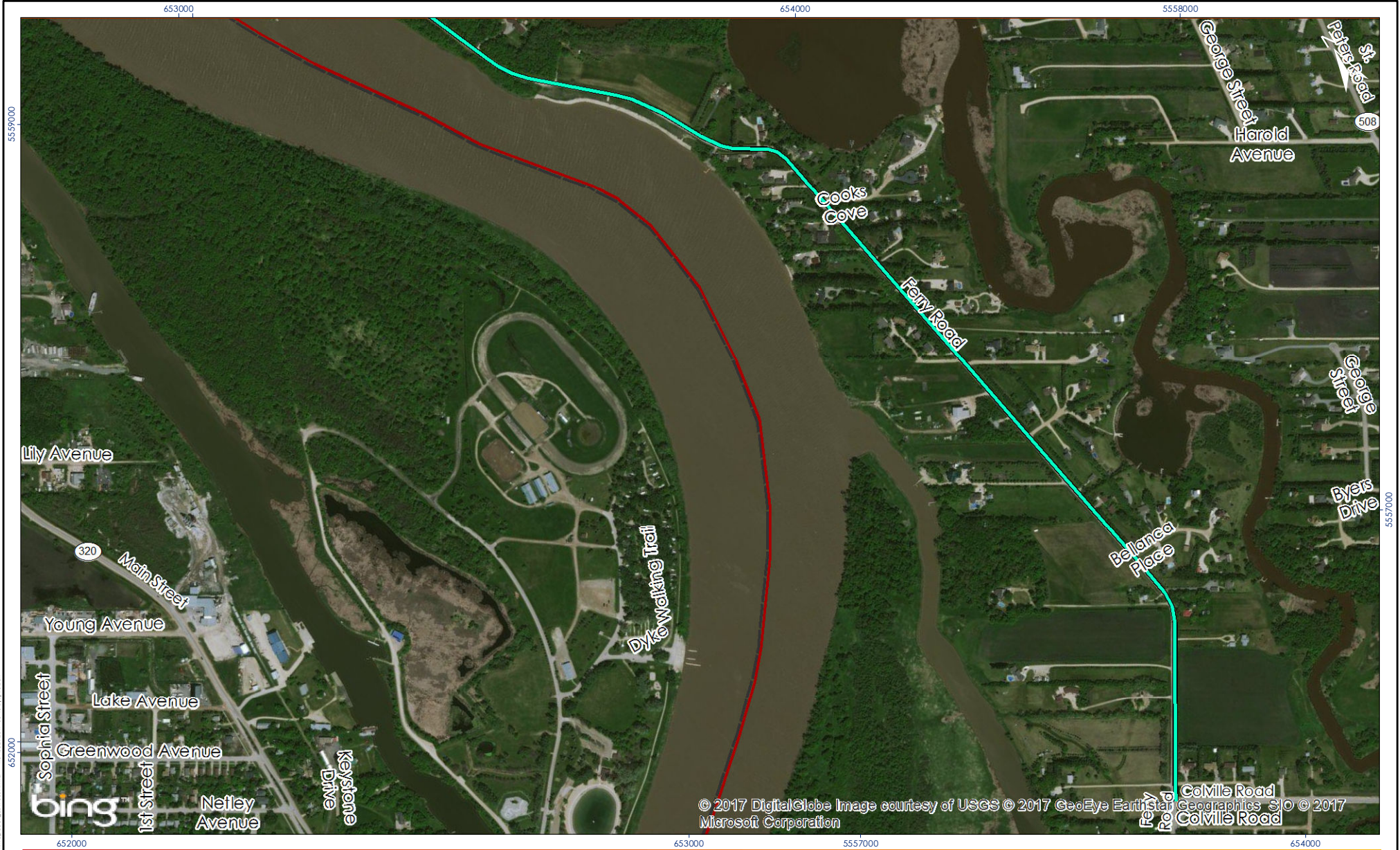
Title

**RM of St.Clements  
Road Surface Classification  
Mapbook**

**DRAFT**

**Map O8**





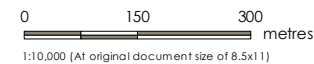
### Legend

RM of St.Clements

### Road Surface Classification

Chip Seal

Hot Mix Asphalt



### Notes

1. Coordinate System: NAD 1983 UTM Zone 14N
2. Microsoft product screen shot(s) (base imagery) reprinted with permission from Microsoft Corporation.



Project Location 1137070

RM of St.Clements, MB

Prepared by JH on 2017-03-10

Technical Review by GK on 2017-03-10

Client/Project

Client: Rural Municipality of St.Clements

Project: RM of St.Clements 2016 Roadworks

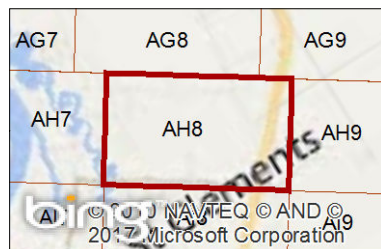
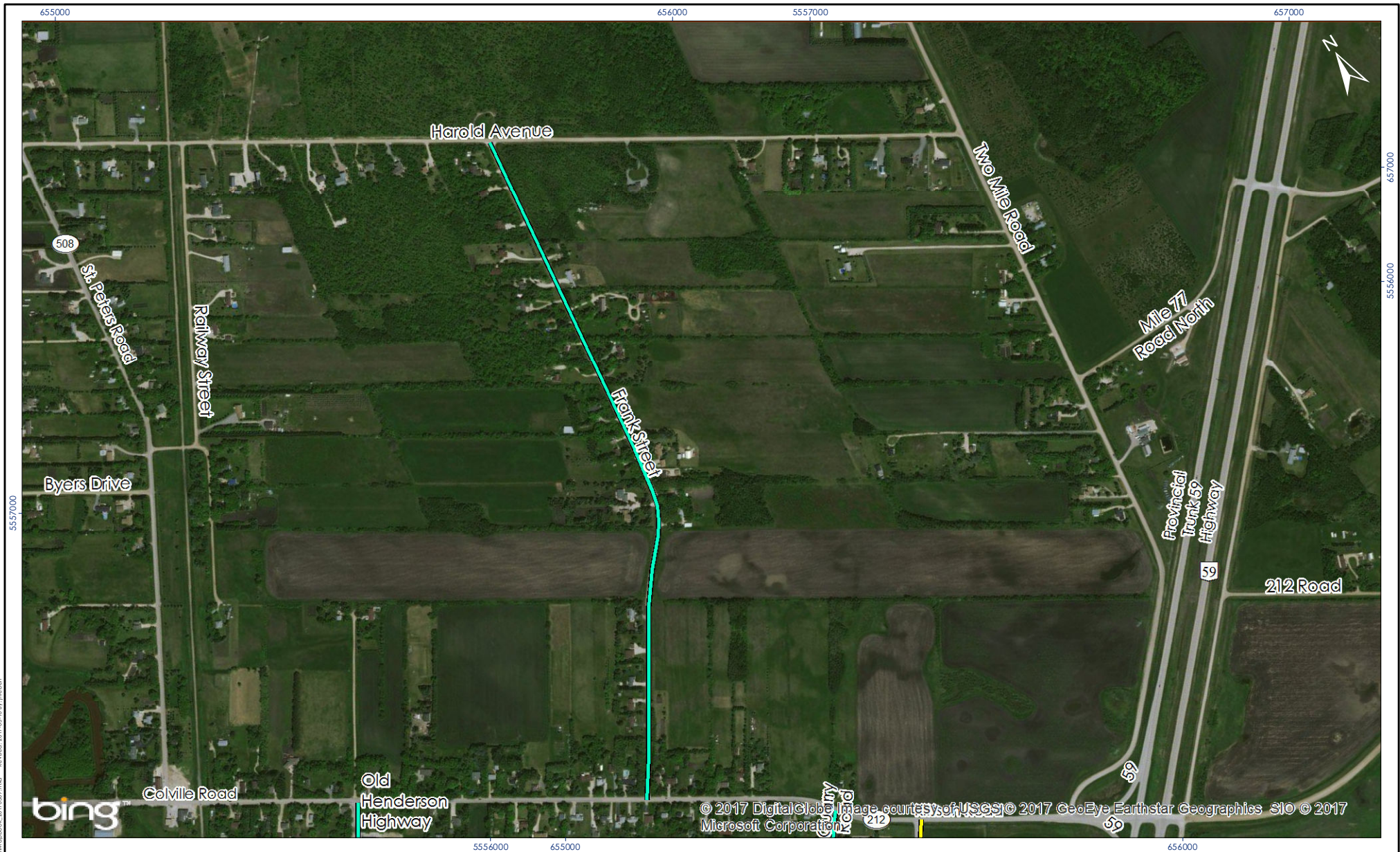
Title

**RM of St.Clements  
Road Surface Classification  
Mapbook**

**DRAFT**

**Map AH7**



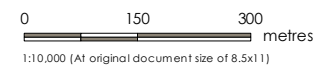


### Legend

RM of St. Clements

### Road Surface Classification

Chip Seal  
 Hot Mix Asphalt



**Notes**  
 1. Coordinate System: NAD 1983 UTM Zone 14N  
 2. Microsoft product screen shot(s) (base imagery) reprinted with permission from Microsoft Corporation.



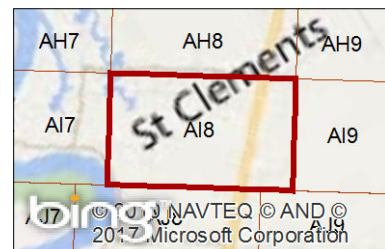
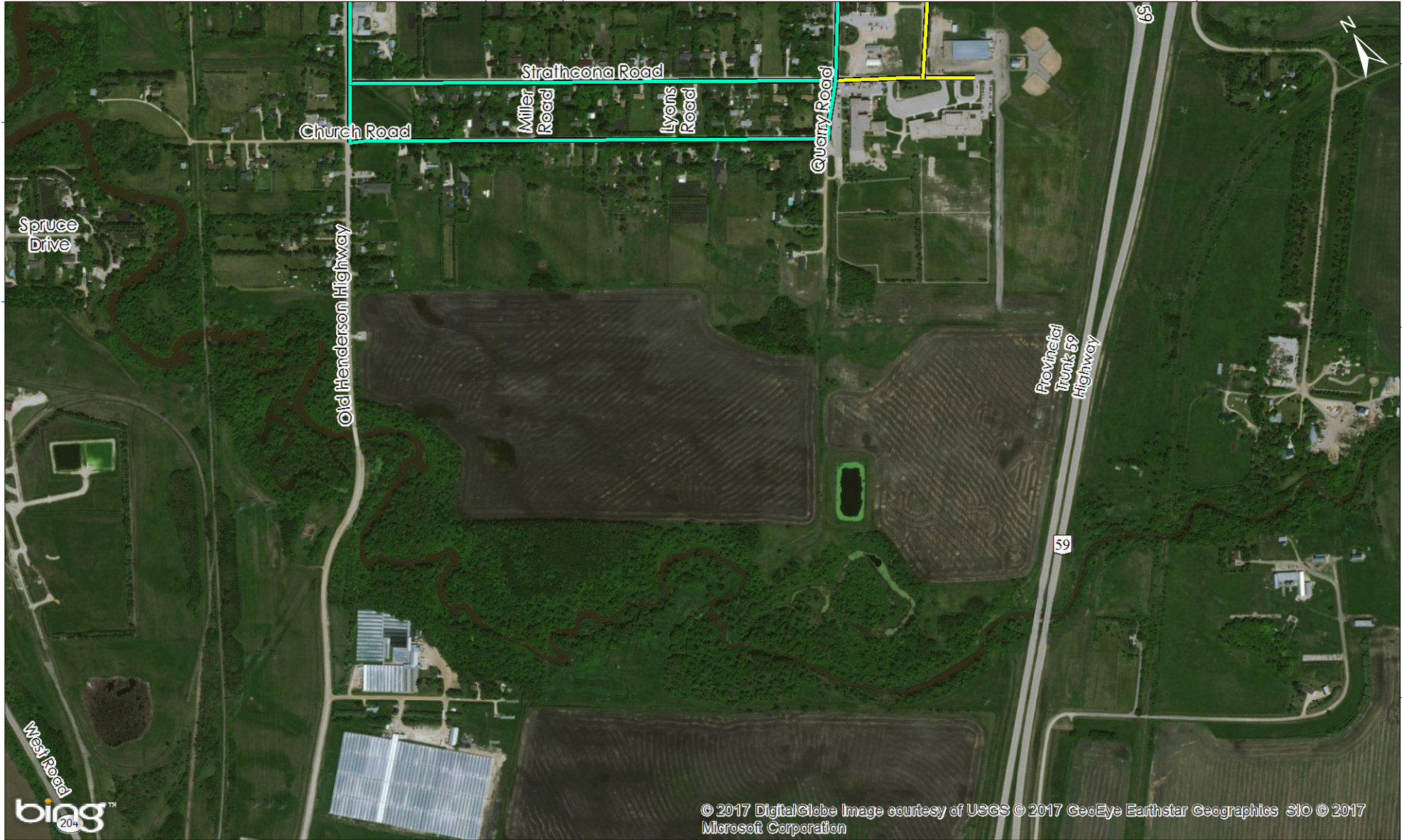
Project Location 113707070

RM of St. Clements, MB  
 Prepared by JH on 2017-03-10  
 Technical Review by GK on 2017-03-10

Client/Project  
 Client: Rural Municipality of St. Clements  
 Project: RM of St. Clements 2016 Roadworks

Title  
**RM of St. Clements  
 Road Surface Classification  
 Mapbook**  
**DRAFT**  
**Map AH8**





## Legend

RM of St. Clements

## Road Surface Classification

Chip Seal

Hot Mix Asphalt

0 150 300 metres  
1:10,000 (At original document size of 8.5x11)

## Notes

1. Coordinate System: NAD 1983 UTM Zone 14N
2. Microsoft product screen shot(s) (base imagery) reprinted with permission from Microsoft Corporation.



Project Location 113707070

RM of St. Clements, MB

Prepared by JH on 2017-03-10

Technical Review by GK on 2017-03-10

Client/Project

Client: Rural Municipality of St. Clements

Project: RM of St. Clements 2016 Roadworks

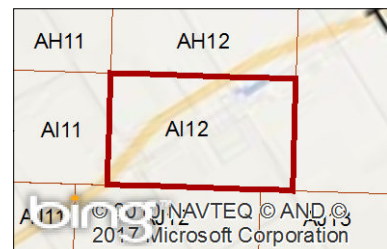
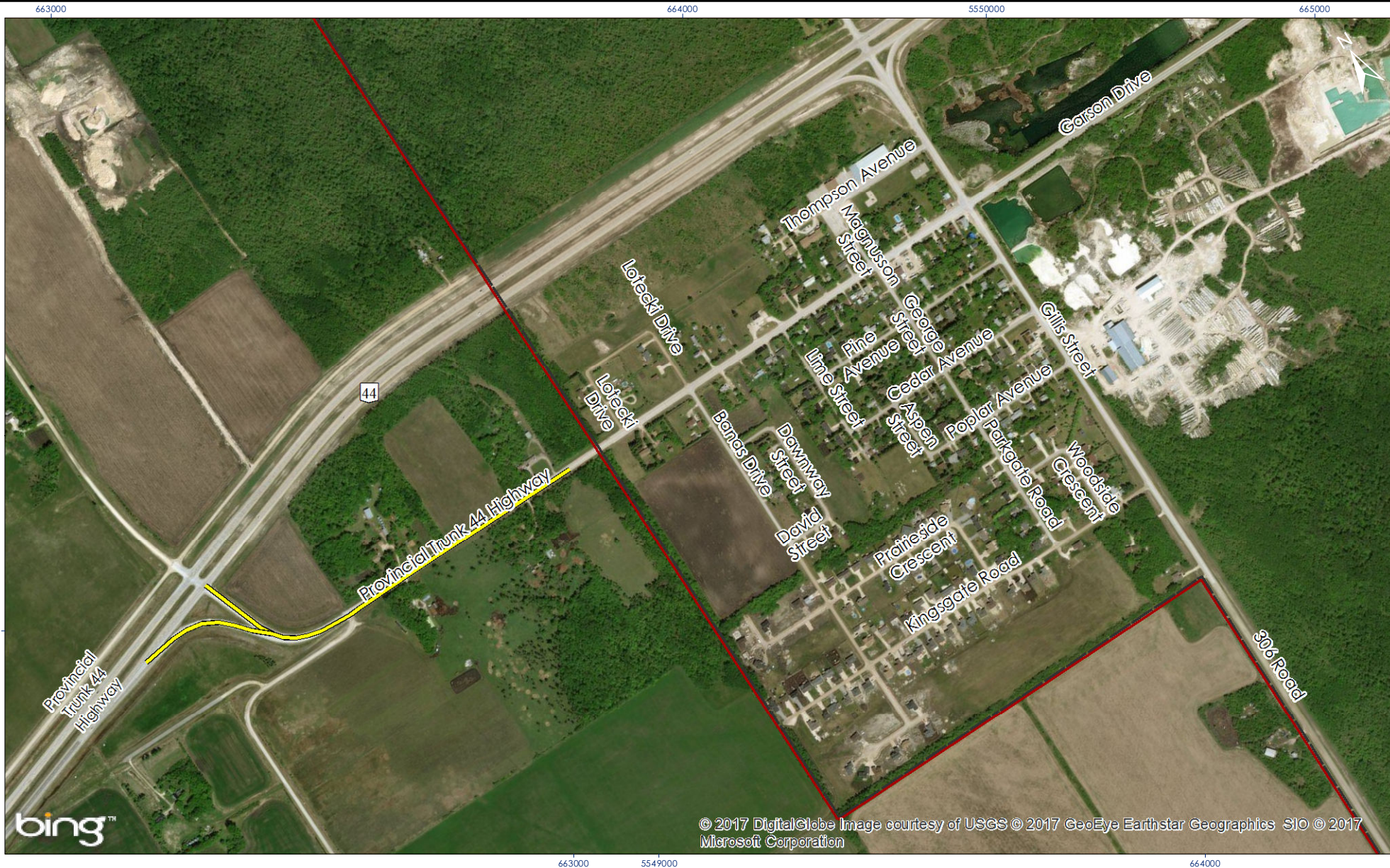
Title

**RM of St. Clements  
Road Surface Classification  
Mapbook**

**DRAFT**

**Map AI8**





## Legend

RM of St.Clements

## Road Surface Classification

Chip Seal

Hot Mix Asphalt

0 150 300 metres  
1:10,000 (At original document size of 8.5x11)

## Notes

1. Coordinate System: NAD 1983 UTM Zone 14N
2. Microsoft product screen shot(s) (base imagery) reprinted with permission from Microsoft Corporation.



Project Location 113707070

RM of St.Clements, MB

Prepared by JH on 2017-03-10

Technical Review by GK on 2017-03-10

Client/Project

Client: Rural Municipality of St.Clements

Project: RM of St.Clements 2016 Roadworks

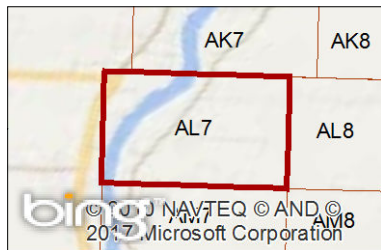
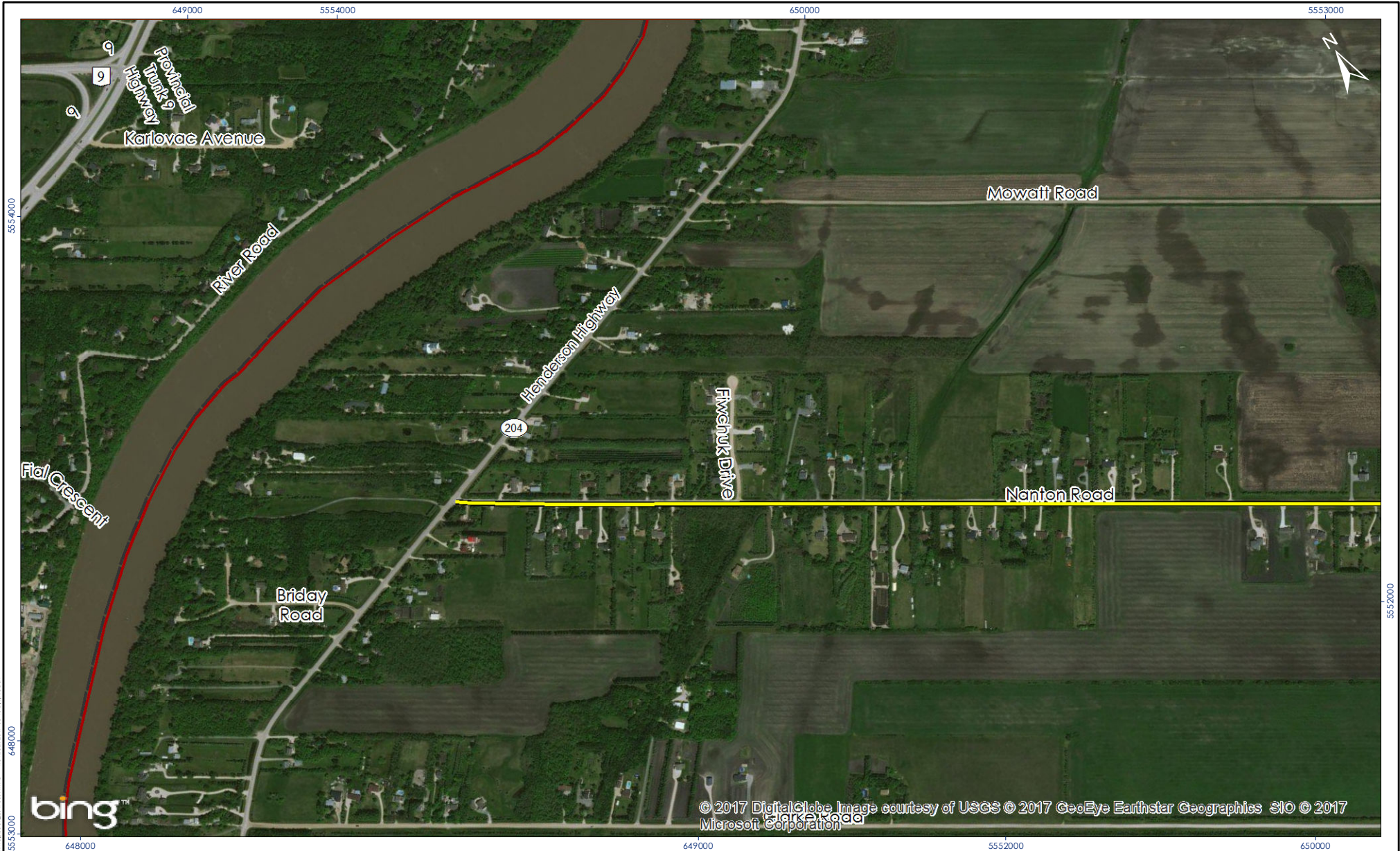
Title

**RM of St.Clements  
Road Surface Classification  
Mapbook**

**DRAFT**

**Map AI12**



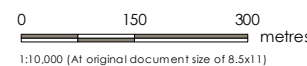


### Legend

RM of St. Clements

### Road Surface Classification

Chip Seal  
 Hot Mix Asphalt

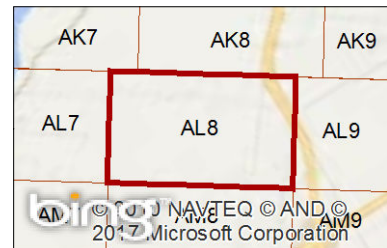


**Notes**  
 1. Coordinate System: NAD 1983 UTM Zone 14N  
 2. Microsoft product screen shot(s) (base imagery) reprinted with permission from Microsoft Corporation.



Project Location	1137070
RM of St. Clements, MB	Prepared by JH on 2017-03-10 Technical Review by GK on 2017-03-10
Client/Project	Client: Rural Municipality of St. Clements Project: RM of St. Clements 2016 Roadworks
Title	<b>RM of St. Clements Road Surface Classification Mapbook</b>
	<b>DRAFT</b>
	<b>Map AL7</b>





### Legend

RM of St.Clements

### Road Surface Classification

Chip Seal

Hot Mix Asphalt

0 150 300 metres

1:10,000 (At original document size of 8.5x11)

**Notes**

1. Coordinate System: NAD 1983 UTM Zone 14N

2. Microsoft product screen shot(s) (base imagery) reprinted with permission from Microsoft Corporation.



Project Location 113707070

RM of St.Clements, MB Prepared by JH on 2017-03-10

Technical Review by GK on 2017-03-10

Client/Project

Client: Rural Municipality of St.Clements

Project: RM of St.Clements 2016 Roadworks

Title

**RM of St.Clements**

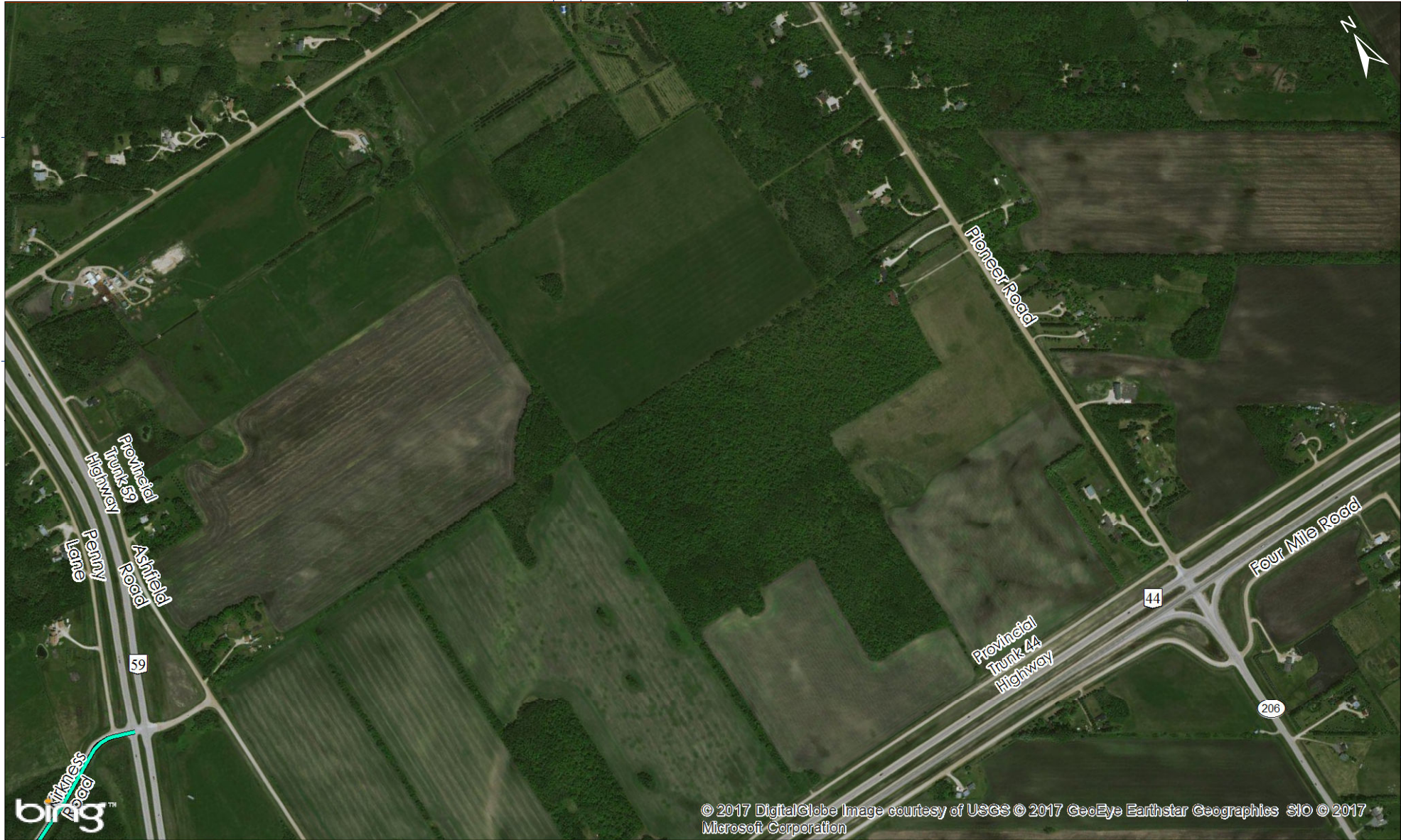
**Road Surface Classification**

**Mapbook**

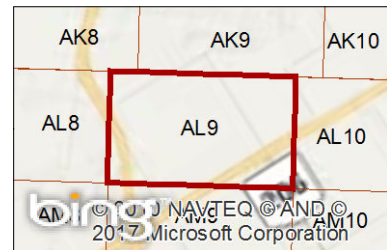
**DRAFT**

Map AL8





© 2017 DigitalGlobe Image courtesy of USGS © 2017 GeoEye Earthstar Geographics SIO © 2017 Microsoft Corporation

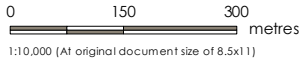


### Legend

RM of St.Clements

### Road Surface Classification

- Chip Seal
- Hot Mix Asphalt



**Notes**  
 1. Coordinate System: NAD 1983 UTM Zone 14N  
 2. Microsoft product screen shot(s) (base imagery) reprinted with permission from Microsoft Corporation.



Project Location 113707070

RM of St.Clements, MB Prepared by JH on 2017-03-10  
 Technical Review by GK on 2017-03-10

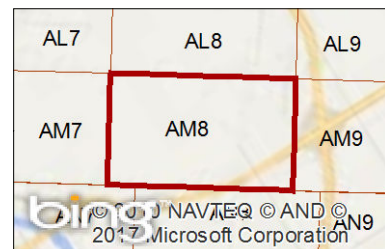
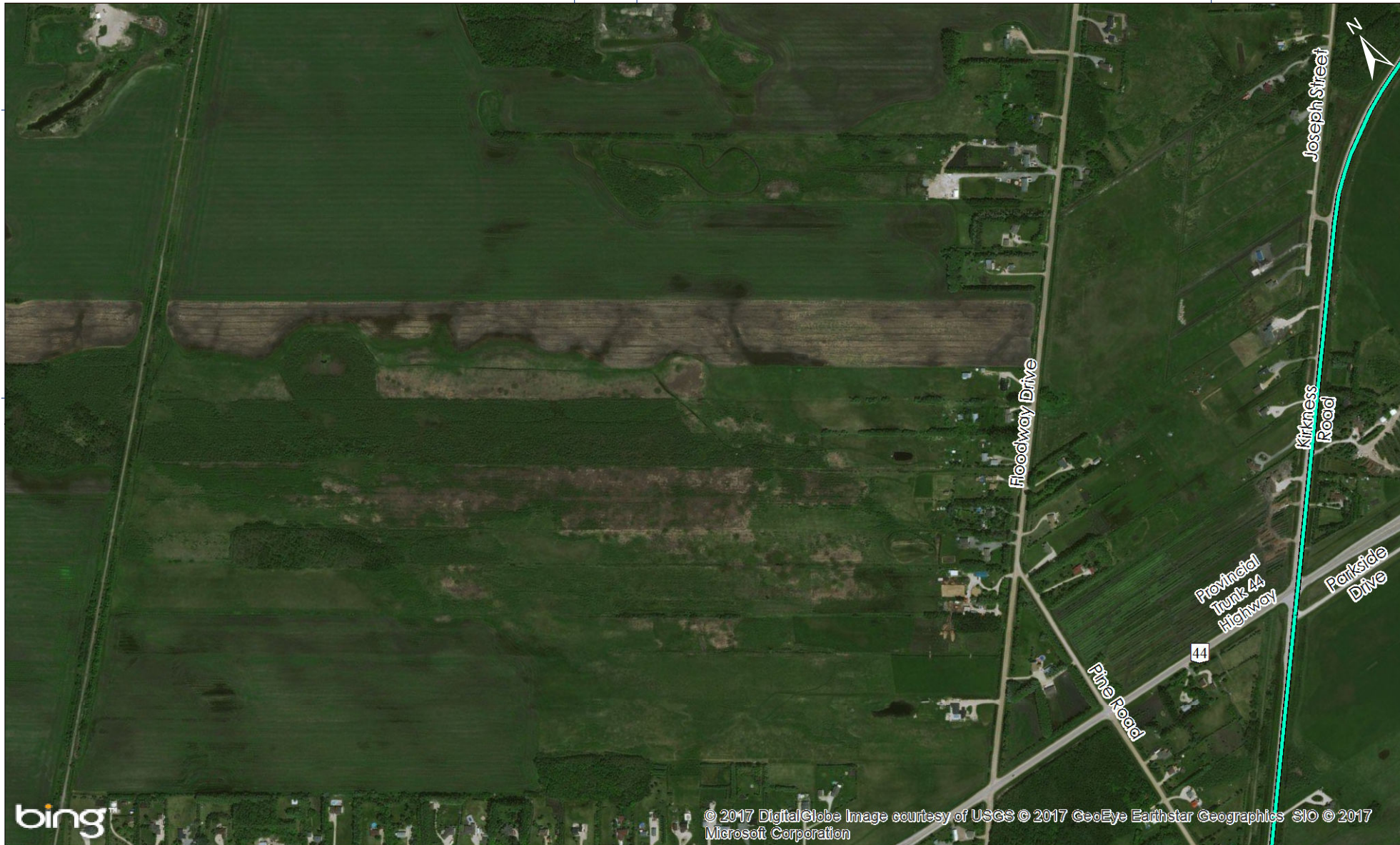
Client/Project  
 Client: Rural Municipality of St.Clements  
 Project: RM of St.Clements 2016 Roadworks

Title  
**RM of St.Clements  
 Road Surface Classification  
 Mapbook**

**DRAFT**

**Map AL9**





### Legend

RM of St.Clements

### Road Surface Classification

Chip Seal  
 Hot Mix Asphalt

0 150 300 metres  
 1:10,000 (At original document size of 8.5x11)

**Notes**  
 1. Coordinate System: NAD 1983 UTM Zone 14N  
 2. Microsoft product screen shot(s) (base imagery) reprinted with permission from Microsoft Corporation.



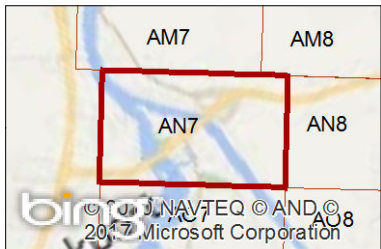
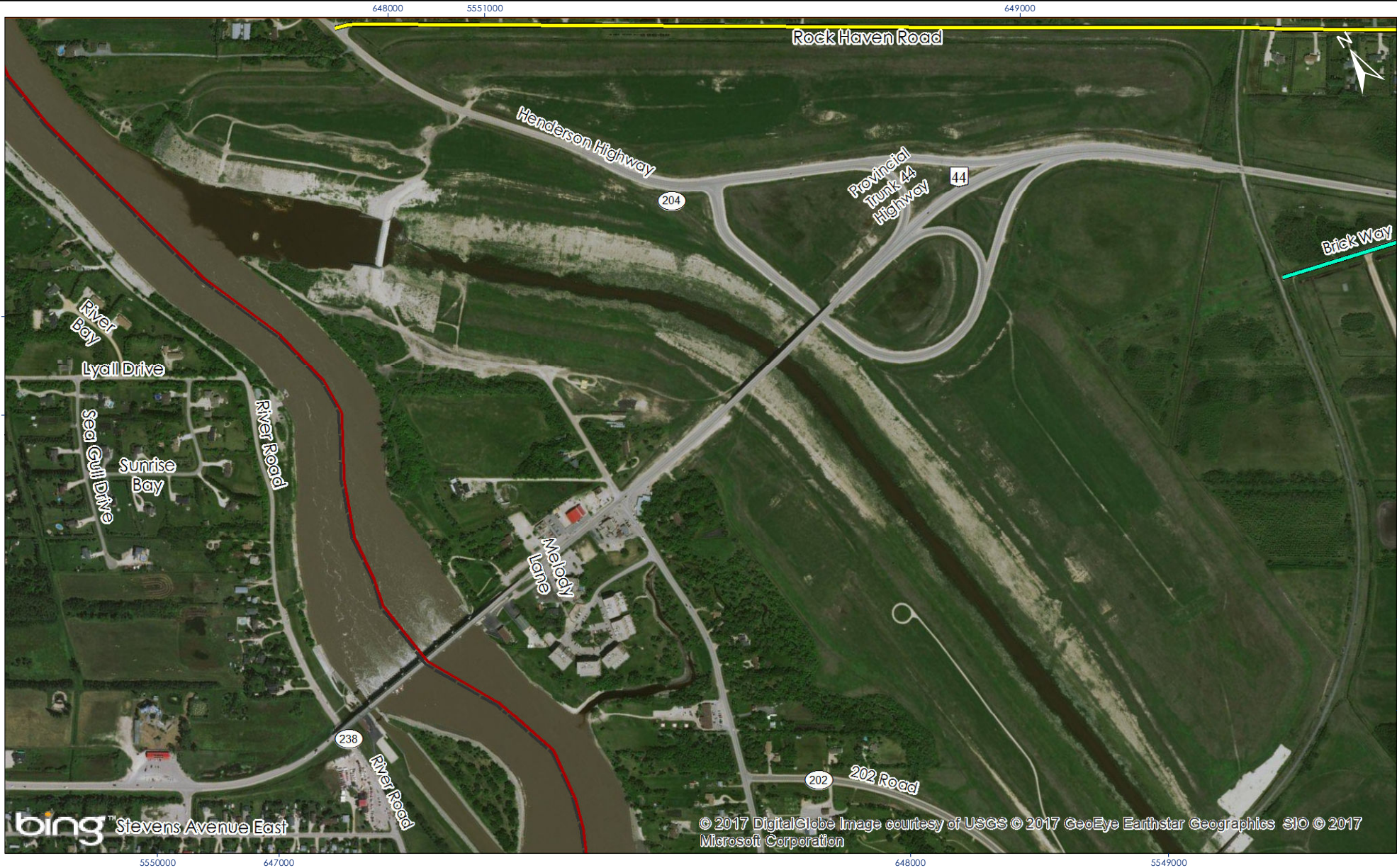
Project Location 113707070

RM of St.Clements, MB Prepared by JH on 2017-03-10  
 Technical Review by GK on 2017-03-10

Client/Project  
 Client: Rural Municipality of St.Clements  
 Project: RM of St.Clements 2016 Roadworks

Title **DRAFT**  
**RM of St.Clements**  
**Road Surface Classification**  
**Mapbook**  
**Map AM8**





### Legend

RM of St.Clements

### Road Surface Classification

Chip Seal

Hot Mix Asphalt

0 150 300 metres

1:10,000 (At original document size of 8.5x11)

**Notes**

1. Coordinate System: NAD 1983 UTM Zone 14N

2. Microsoft product screen shot(s) (base imagery) reprinted with permission from Microsoft Corporation.



Project Location 113707070

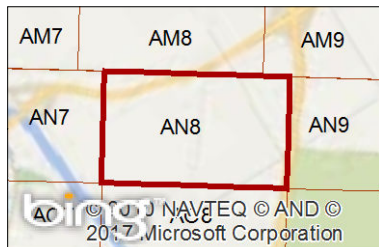
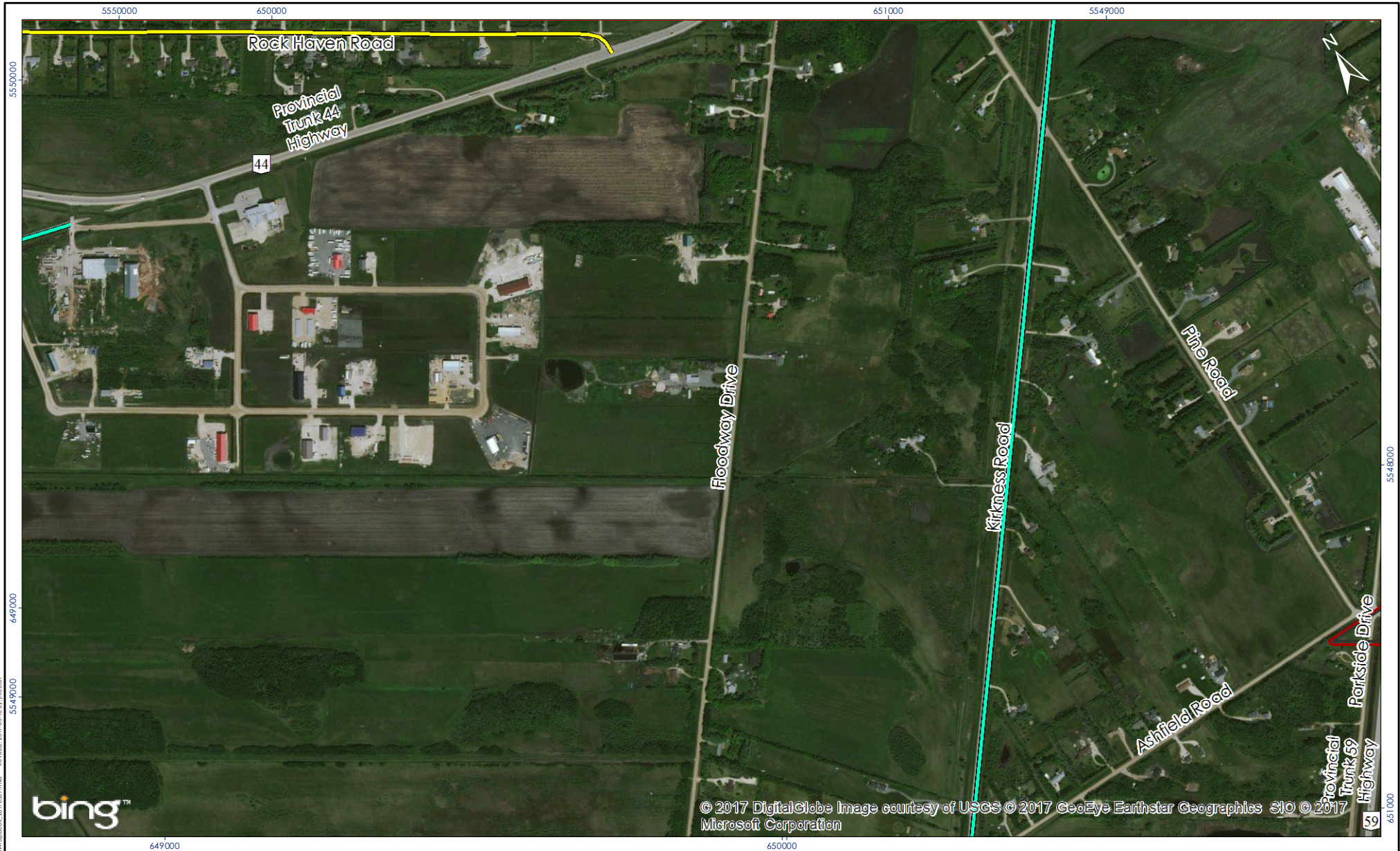
RM of St.Clements, MB Prepared by JH on 2017-03-10  
Technical Review by GK on 2017-03-10

Client/Project  
Client: Rural Municipality of St.Clements  
Project: RM of St.Clements 2016 Roadworks

Title **DRAFT**  
**RM of St.Clements**  
**Road Surface Classification**  
**Mapbook**

Map AN7





### Legend

RM of St. Clements

### Road Surface Classification

Chip Seal

Hot Mix Asphalt

0 150 300 metres

1:10,000 (At original document size of 8.5x11)

### Notes

1. Coordinate System: NAD 1983 UTM Zone 14N
2. Microsoft product screen shot(s) (base imagery) reprinted with permission from Microsoft Corporation.



Project Location 113707070

RM of St. Clements, MB Prepared by JH on 2017-03-10  
Technical Review by GK on 2017-03-10

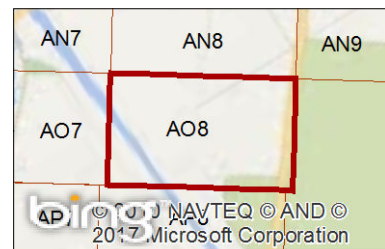
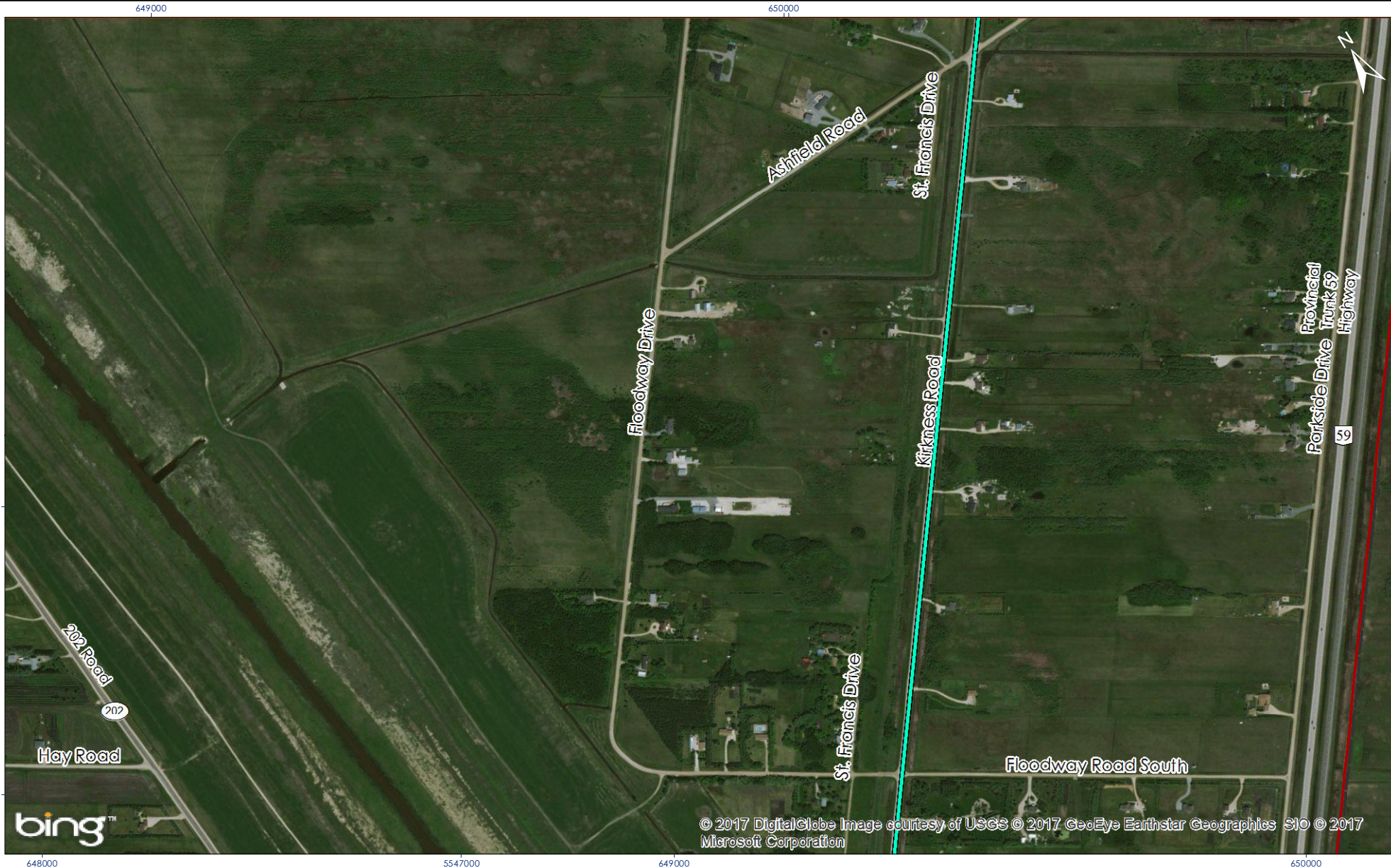
Client/Project  
Client: Rural Municipality of St. Clements  
Project: RM of St. Clements 2016 Roadworks

Title  
**RM of St. Clements  
Road Surface Classification  
Mapbook**

**DRAFT**

**Map AN8**





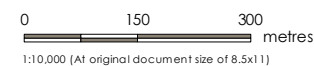
## Legend

RM of St. Clements

## Road Surface Classification

Chip Seal

Hot Mix Asphalt



**Notes**  
 1. Coordinate System: NAD 1983 UTM Zone 14N  
 2. Microsoft product screen shot(s) (base imagery) reprinted with permission from Microsoft Corporation.



Project Location 113707070

RM of St. Clements, MB Prepared by JH on 2017-03-10  
 Technical Review by GK on 2017-03-10

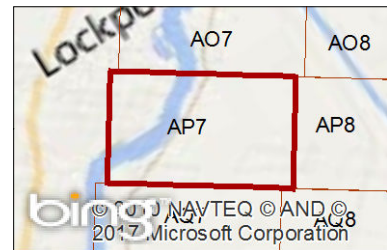
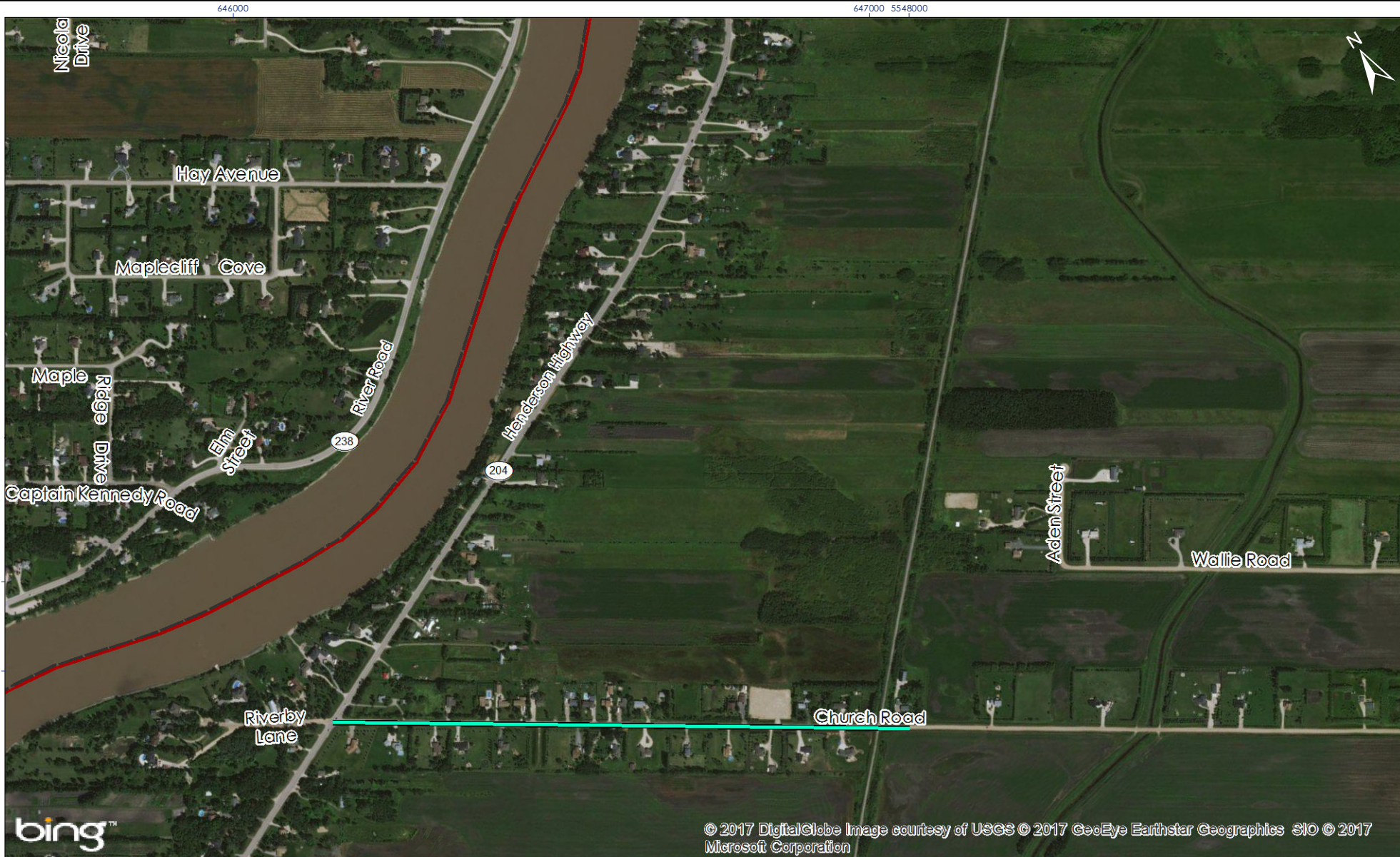
Client/Project  
 Client: Rural Municipality of St. Clements  
 Project: RM of St. Clements 2016 Roadworks

Title  
**RM of St. Clements**  
**Road Surface Classification**  
**Mapbook**

**DRAFT**

**Map AO8**





### Legend

RM of St.Clements

### Road Surface Classification

Chip Seal  
 Hot Mix Asphalt



**Notes**  
 1. Coordinate System: NAD 1983 UTM Zone 14N  
 2. Microsoft product screen shot(s) (base imagery) reprinted with permission from Microsoft Corporation.



Project Location 113707070

RM of St.Clements, MB Prepared by JH on 2017-03-10  
 Technical Review by GK on 2017-03-10

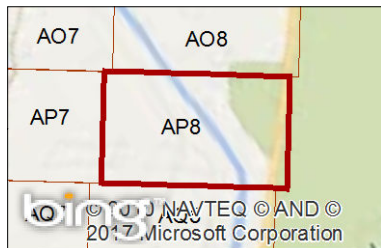
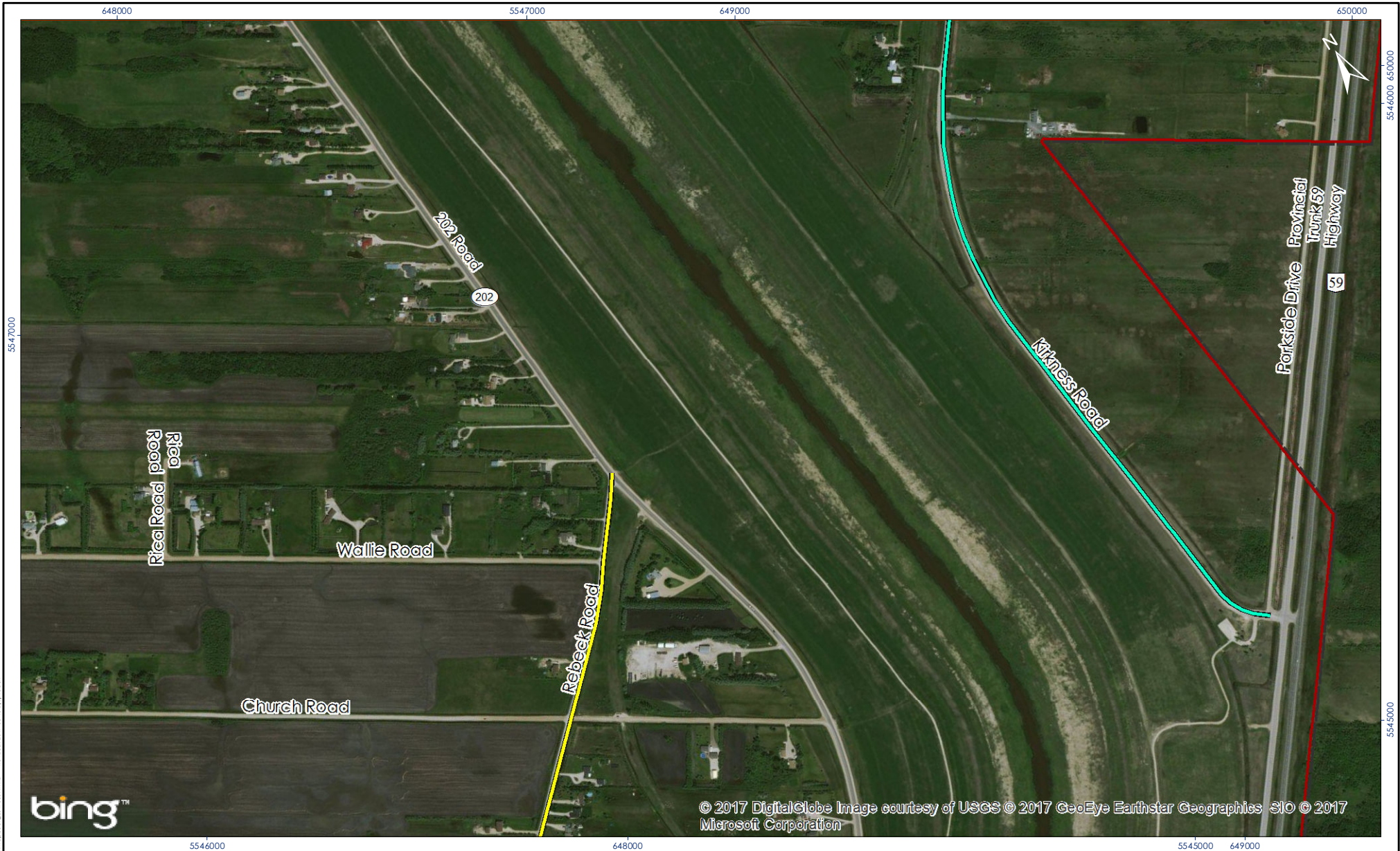
Client/Project  
 Client: Rural Municipality of St.Clements  
 Project: RM of St.Clements 2016 Roadworks

Title  
**RM of St.Clements  
 Road Surface Classification  
 Mapbook**

**DRAFT**

**Map AP7**





### Legend

RM of St.Clements

### Road Surface Classification

Chip Seal

Hot Mix Asphalt

0 150 300 metres  
1:10,000 (At original document size of 8.5x11)

### Notes

1. Coordinate System: NAD 1983 UTM Zone 14N
2. Microsoft product screen shot(s) (base imagery) reprinted with permission from Microsoft Corporation.



Project Location 113707070

RM of St.Clements, MB

Prepared by JH on 2017-03-10

Technical Review by GK on 2017-03-10

Client/Project

Client: Rural Municipality of St.Clements  
Project: RM of St.Clements 2016 Roadworks

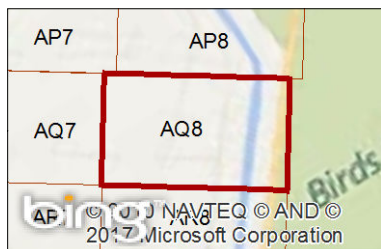
Title

**RM of St.Clements  
Road Surface Classification  
Mapbook**

**DRAFT**

**Map AP8**





### Legend

RM of St.Clements

### Road Surface Classification

Chip Seal

Hot Mix Asphalt

0 150 300 metres

1:10,000 (At original document size of 8.5x11)

**Notes**

1. Coordinate System: NAD 1983 UTM Zone 14N

2. Microsoft product screen shot(s) (base imagery) reprinted with permission from Microsoft Corporation.



Project Location 113707070

RM of St.Clements, MB Prepared by JH on 2017-03-10

Technical Review by GK on 2017-03-10

Client/Project

Client: Rural Municipality of St.Clements

Project: RM of St.Clements 2016 Roadworks

Title

**RM of St.Clements**

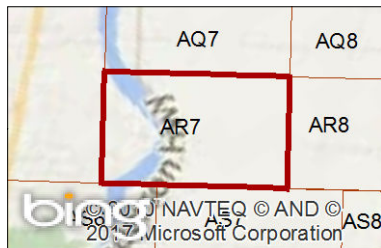
**Road Surface Classification**

**Mapbook**

**DRAFT**

Map AQ8





### Legend

RM of St.Clements

### Road Surface Classification

Chip Seal

Hot Mix Asphalt

0 150 300 metres  
1:10,000 (At original document size of 8.5x11)

### Notes

1. Coordinate System: NAD 1983 UTM Zone 14N
2. Microsoft product screen shot(s) (base imagery) reprinted with permission from Microsoft Corporation.



Project Location 113707070

RM of St.Clements, MB Prepared by JH on 2017-03-10  
Technical Review by GK on 2017-03-10

Client/Project

Client: Rural Municipality of St.Clements  
Project: RM of St.Clements 2016 Roadworks

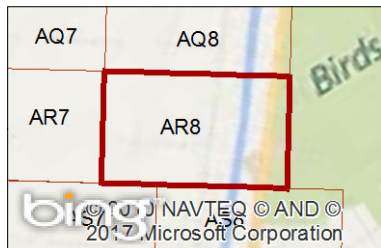
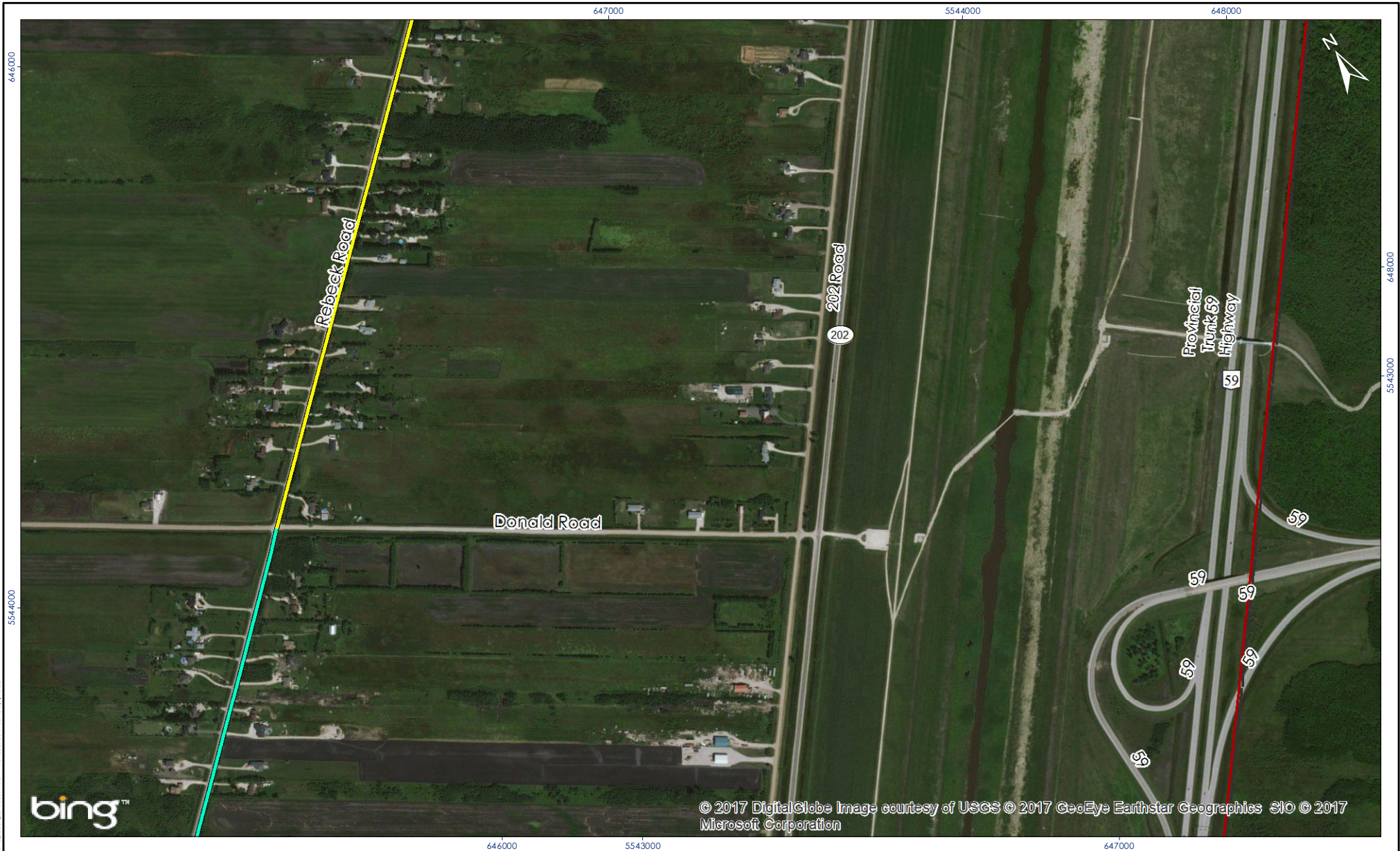
Title

**RM of St.Clements  
Road Surface Classification  
Mapbook**

**DRAFT**

**Map AR7**





### Legend

RM of St.Clements

### Road Surface Classification

Chip Seal

Hot Mix Asphalt

0 150 300 metres  
1:10,000 (At original document size of 8.5x11)

### Notes

1. Coordinate System: NAD 1983 UTM Zone 14N
2. Microsoft product screen shot(s) (base imagery) reprinted with permission from Microsoft Corporation.



Project Location 113707070

RM of St.Clements, MB

Prepared by JH on 2017-03-10

Technical Review by GK on 2017-03-10

Client/Project

Client: Rural Municipality of St.Clements

Project: RM of St.Clements 2016 Roadworks

Title

**RM of St.Clements  
Road Surface Classification  
Mapbook**

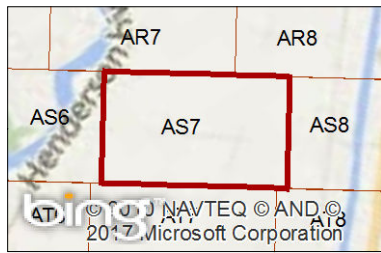
**DRAFT**

**Map AR8**









- Legend**
-  RM of St.Clements
- Road Surface Classification**
-  Chip Seal
  -  Hot Mix Asphalt

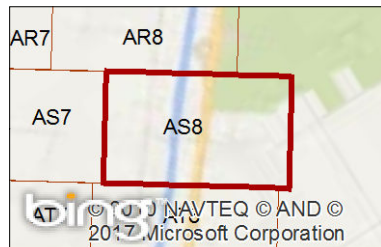
0 150 300 metres  
1:10,000 (At original document size of 8.5x11)

**Notes**  
 1. Coordinate System: NAD 1983 UTM Zone 14N  
 2. Microsoft product screen shot(s) (base imagery) reprinted with permission from Microsoft Corporation.



Project Location	113707070
RM of St.Clements, MB	Prepared by JH on 2017-03-10
	Technical Review by GK on 2017-03-10
Client/Project	
Client: Rural Municipality of St.Clements	
Project: RM of St.Clements 2016 Roadworks	
Title	<b>DRAFT</b>
<b>RM of St.Clements</b>	
<b>Road Surface Classification</b>	
<b>Mapbook</b>	
<b>Map AS7</b>	





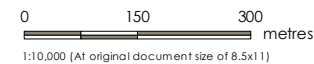
### Legend

RM of St.Clements

### Road Surface Classification

Chip Seal

Hot Mix Asphalt



### Notes

1. Coordinate System: NAD 1983 UTM Zone 14N
2. Microsoft product screen shot(s) (base imagery) reprinted with permission from Microsoft Corporation.



Project Location 113707070

RM of St.Clements, MB

Prepared by JH on 2017-03-10

Technical Review by GK on 2017-03-10

Client/Project

Client: Rural Municipality of St.Clements

Project: RM of St.Clements 2016 Roadworks

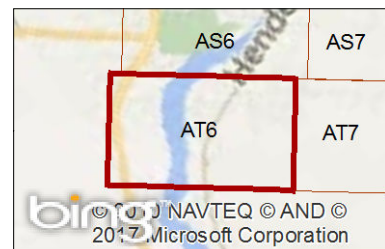
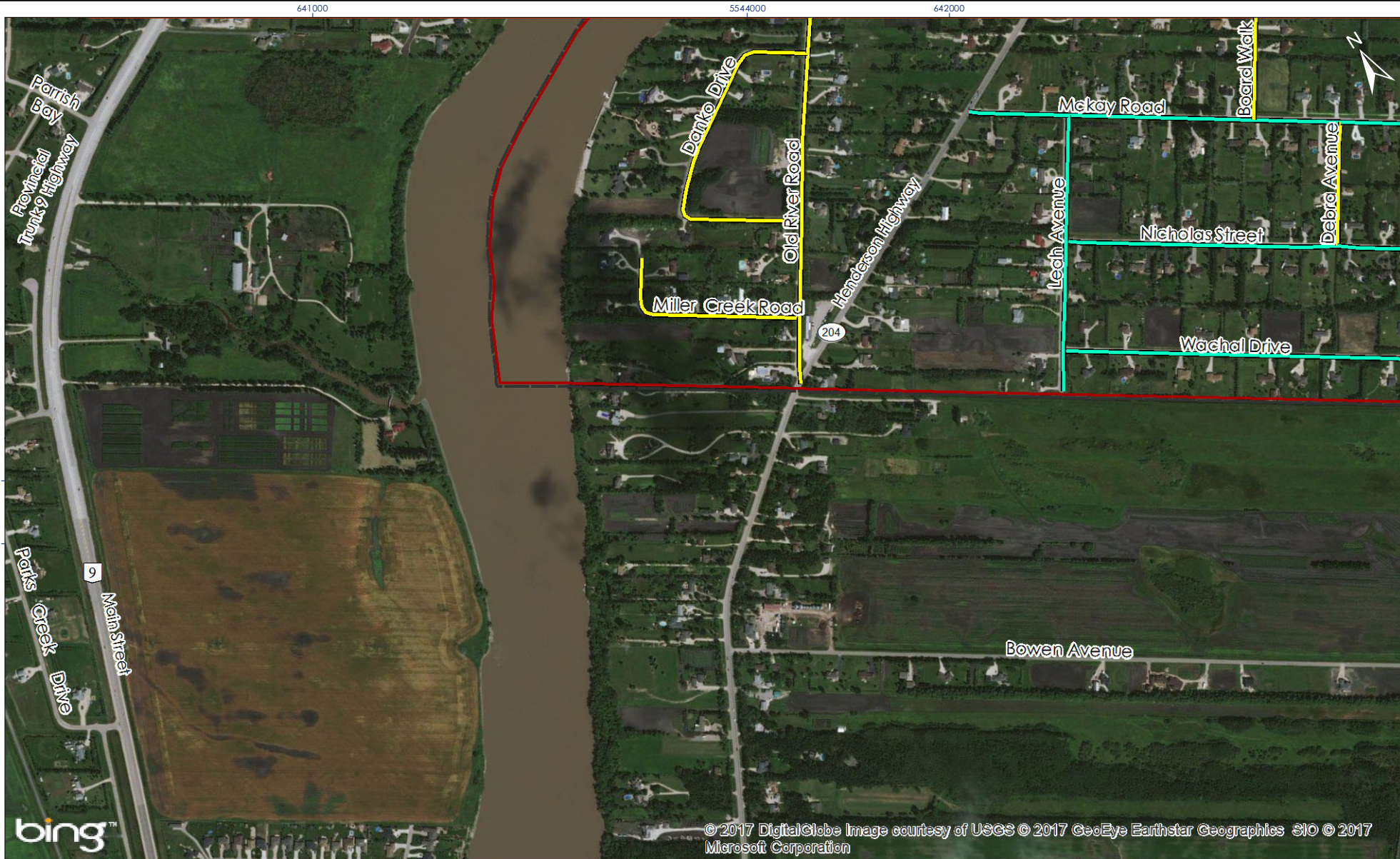
Title

**RM of St.Clements  
Road Surface Classification  
Mapbook**

**DRAFT**

**Map AS8**





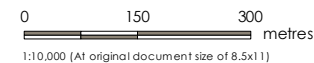
### Legend

RM of St. Clements

### Road Surface Classification

Chip Seal

Hot Mix Asphalt



### Notes

1. Coordinate System: NAD 1983 UTM Zone 14N
2. Microsoft product screen shot(s) (base imagery) reprinted with permission from Microsoft Corporation.



Project Location 113707070

RM of St. Clements, MB

Prepared by JH on 2017-03-10

Technical Review by GK on 2017-03-10

Client/Project

Client: Rural Municipality of St. Clements

Project: RM of St. Clements 2016 Roadworks

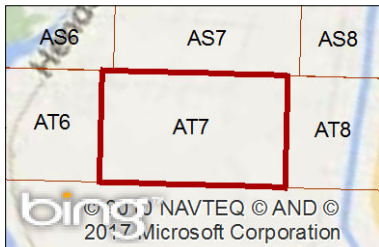
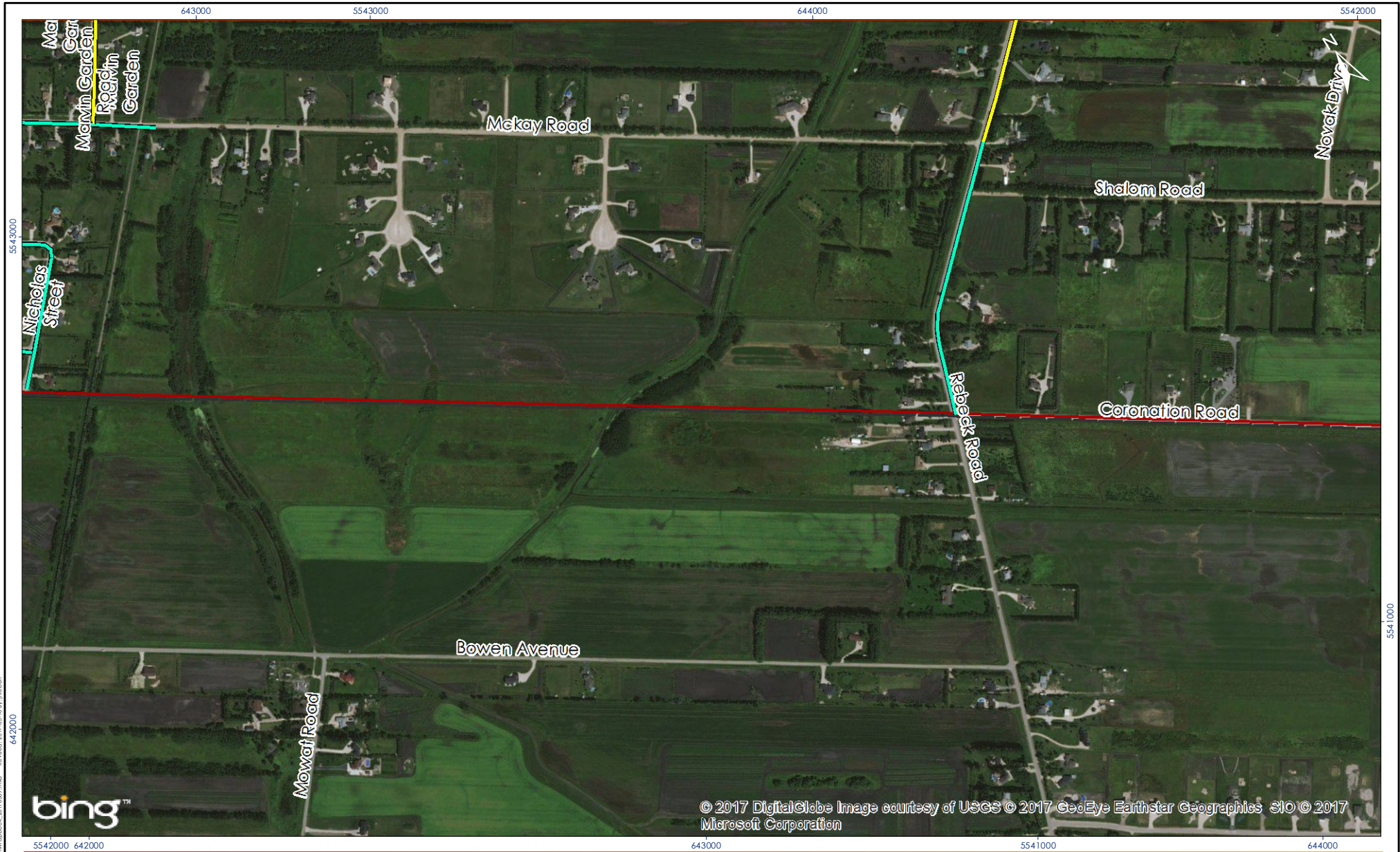
Title

**RM of St. Clements  
Road Surface Classification  
Mapbook**

**DRAFT**

**Map AT6**





### Legend

RM of St. Clements

### Road Surface Classification

Chip Seal

Hot Mix Asphalt

0 150 300 metres  
1:10,000 (At original document size of 8.5x11)

### Notes

1. Coordinate System: NAD 1983 UTM Zone 14N
2. Microsoft product screen shot(s) (base imagery) reprinted with permission from Microsoft Corporation.



Project Location 113707070

RM of St. Clements, MB

Prepared by JH on 2017-03-10

Technical Review by GK on 2017-03-10

Client/Project

Client: Rural Municipality of St. Clements

Project: RM of St. Clements 2016 Roadworks

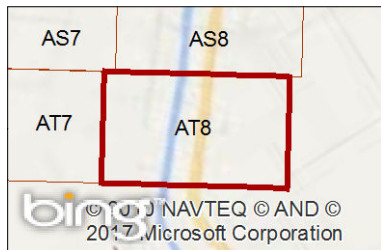
Title

**RM of St. Clements  
Road Surface Classification  
Mapbook**

**DRAFT**

**Map AT7**





### Legend

RM of St. Clements

### Road Surface Classification

Chip Seal

Hot Mix Asphalt



### Notes

1. Coordinate System: NAD 1983 UTM Zone 14N
2. Microsoft product screen shot(s) (base imagery) reprinted with permission from Microsoft Corporation.



Project Location 113707070

RM of St. Clements, MB Prepared by JH on 2017-03-10  
Technical Review by GK on 2017-03-10

Client/Project

Client: Rural Municipality of St. Clements  
Project: RM of St. Clements 2016 Roadworks

Title

**RM of St. Clements  
Road Surface Classification  
Mapbook**

**DRAFT**

**Map AT8**