

# 2023

## Waste & Recycling Collection Schedule



*St. Clements*  
The place to be

### Curbside Waste & Recycling Pickup Zones

#### ZONE 1 - MONDAY

Within the Narol and West Pine Ridge boundaries excluding the Keaschell Trailer Park

#### ZONE 2 - TUESDAY

Within the Gonor and Lockport areas, including west of PTH 59 and south of PTH 44

#### ZONE 3 - TUESDAY

North of PTH 44, west of PTH 59 and south of PR 509

#### ZONE 4 - MONDAY

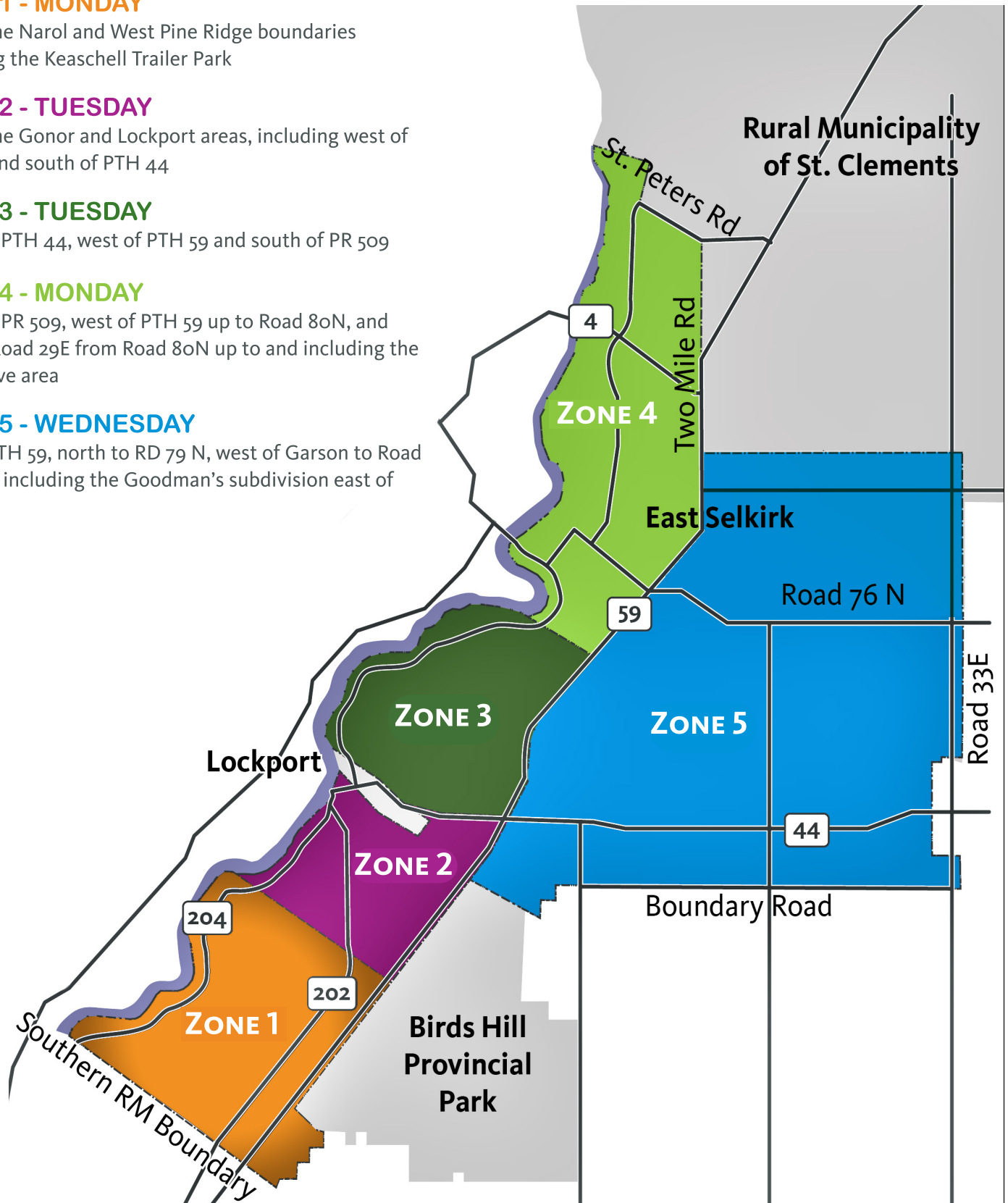
North of PR 509, west of PTH 59 up to Road 80N, and west of Road 29E from Road 80N up to and including the Peltz Drive area

#### ZONE 5 - WEDNESDAY

East of PTH 59, north to RD 79 N, west of Garson to Road 76N, and including the Goodman's subdivision east of PTH 59

1043 Kittson Road  
Box 2, Group 35, RR 1  
East Selkirk, MB RoE oMo

Phone: 1-204-482-3300  
info@rmofstclements.com  
rmofstclements.com



# 2023

## Waste & Recycling Collection Schedule



St. Clements  
The place to be



### WASTE COLLECTION

Waste will be collected in your zone **EVERY WEEK.**



### RECYCLING COLLECTION

Recycling is collected in your zone **EVERY OTHER WEEK.**



### COLLECTION ZONES



MAY 2023						
S	M	T	W	T	F	S
	1	2	3	4	5	6
7	8	9	10	11	12	13
14	15	16	17	18	19	20
21	22	23	24	25	26	27
28	29	30	31			

JUNE 2023						
S	M	T	W	T	F	S
				1	2	3
4	5	6	7	8	9	10
11	12	13	14	15	16	17
18	19	20	21	22	23	24
25	26	27	28	29	30	

JULY 2023						
S	M	T	W	T	F	S
						1
2	3	4	5	6	7	8
9	10	11	12	13	14	15
16	17	18	19	20	21	22
23 30	24 31	25	26	27	28	29

AUGUST 2023						
S	M	T	W	T	F	S
		1	2	3	4	5
6	7	8	9	10	11	12
13	14	15	16	17	18	19
20	21	22	23	24	25	26
27	28	29	30	31		

SEPTEMBER 2023						
S	M	T	W	T	F	S
					1	2
3	4	5	6	7	8	9
10	11	12	13	14	15	16
17	18	19	20	21	22	23
24	25	26	27	28	29	30

OCTOBER 2023						
S	M	T	W	T	F	S
1	2	3	4	5	6	7
8	9	10	11	12	13	14
15	16	17	18	19	20	21
22	23	24	25	26	27	28
29	30	31				

NOVEMBER 2023						
S	M	T	W	T	F	S
			1	2	3	4
5	6	7	8	9	10	11
12	13	14	15	16	17	18
19	20	21	22	23	24	25
26	27	28	29	30		

DECEMBER 2023						
S	M	T	W	T	F	S
					1	2
3	4	5	6	7	8	9
10	11	12	13	14	15	16
17	18	19	20	21	22	23
24 31	25	26	27	28	29	30

**YOUR CURBSIDE COLLECTION PROVIDER:**

204.772.0770 | [www.emterra.ca](http://www.emterra.ca) | [@emterragroup](https://twitter.com/emterragroup)



**EMTERRA**  
Environmental

# ACCEPTABLE ITEMS



**RECYCLE RIGHT:** These items are acceptable in your recycling bin.  
Ensure all items are **EMPTY AND CLEAN**.

## RECYCLE RIGHT ST. CLEMENTS

Include these items (rinsed and free from grease, food and other residue) in your single stream recycle bin - no sorting or bagging required.

### PLASTICS

**WHAT EMPTY AND CLEAN** Plastics labeled #1-7 including bottles, lids, containers, take-out food containers, clamshells and trays, #5 and #6 single serve coffee pods.



### GLASS

**WHAT EMPTY AND CLEAN** Bottles and Jars (All Colors).



### CARTONS

**WHAT EMPTY AND CLEAN** Boxed Food and Beverage Cartons, Paper Cups.



### METAL

**WHAT EMPTY AND CLEAN** Aluminum and Steel Cans, Aluminum Foil.



### PAPER

**WHAT** Newspaper, Magazines, Printed Paper and Shredded Paper.

**HOW** Shredded paper in a clear plastic bag. This is the only item that should be bagged.



### CARDBOARD

**WHAT FLATTENED AND DRY** Cardboard no larger than 4' x 4' x 1'.



## HOW TO PLACE YOUR RECYCLING CART FOR COLLECTION

**PLACE YOUR CART** - with the back wheels towards the curb or at the edge of the road; close lid.

**POINT YOUR CART** - the cart lid opens up from the centre of the road or lane.

**SPACE YOUR CART** - leave one arm's length clearance (one meter or 39 inches) on all sides of each cart. This is to allow the collection truck enough room to grab your cart.

**LOOK UP** - avoid placing your cart under hydro or telephone wires, basketball hoops, awning and tree limbs.

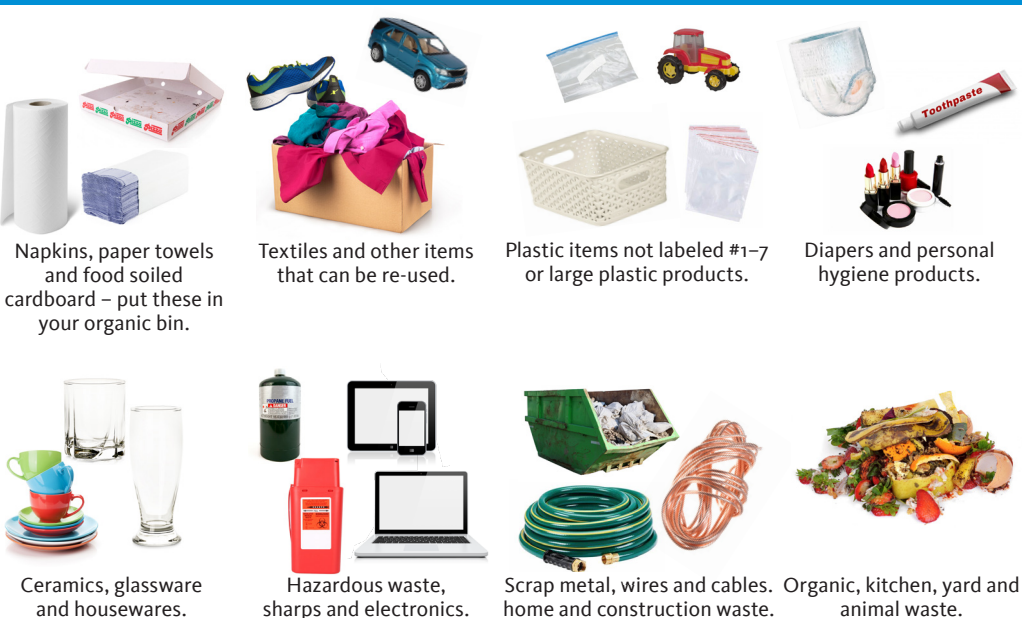
**IN WINTER** - clear snow away from the area around and under where you place your cart at the curb or lane. Do not place carts behind or on top of snowbanks; clear snow and ice off lids so they will open easily when emptied.



## UNACCEPTABLE ITEMS

These items require alternative handling.

### THESE ITEMS ARE NOT ACCEPTED WITH YOUR RECYCLING.



## RECYCLE RIGHT!

About one third of household waste is made up of packaging and printed paper that is recyclable. By separating recyclables from waste and putting them at the curb for collection, you are contributing to a healthier and cleaner environment and community.



## RESPONSIBLE DISPOSAL!

Every year, Emterra Environmental ships 500,000 MT of recyclables to end markets to be re-manufactured into new green products. Be part of the solution.

We believe everything has value. If an item you are looking to dispose of is not listed, find out how to dispose of it properly, visit:

<http://www.gov.mb.ca/sd/wastewise/index.html>



**EMTERRA**  
Environmental

Thinking innovatively  
Transforming waste to resources

**EMTERRA ENVIRONMENTAL  
CUSTOMER SERVICE:**

204.772.0770  
[www.emterra.ca](http://www.emterra.ca)  
@EmterraGroup

